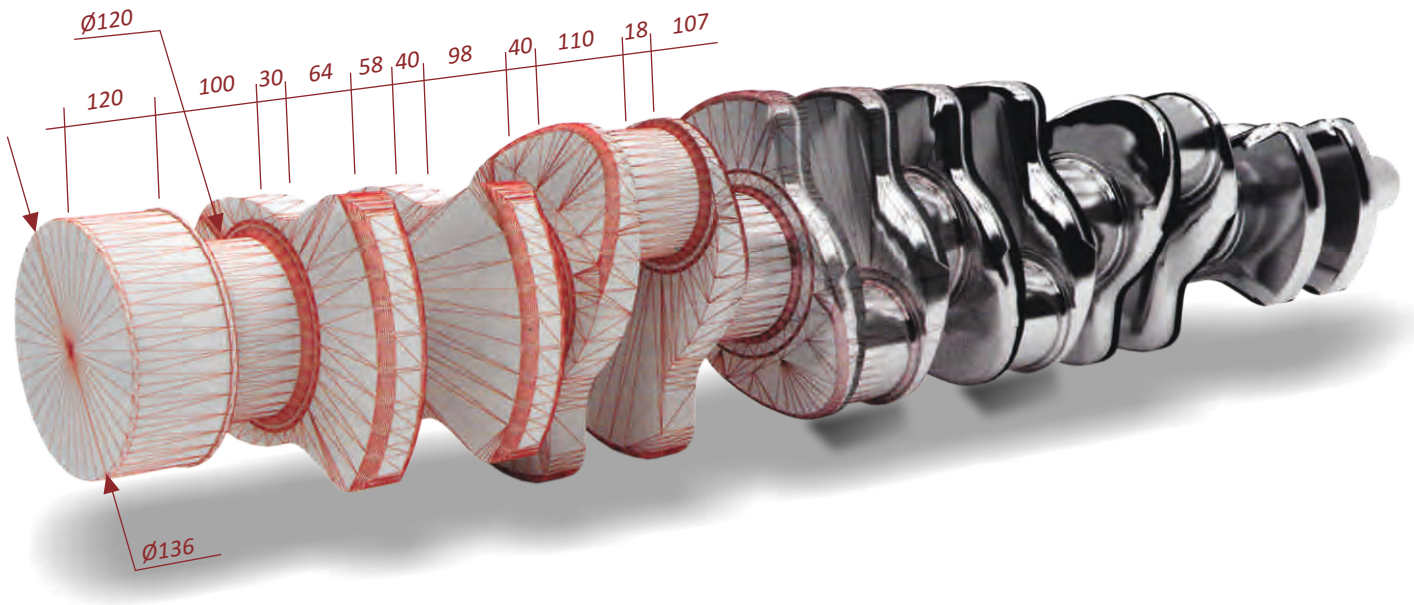


styr™

ACTUAL CRANKSHAFT MANUFACTURER



INHOUSE FORGING SG + CNC MACHINING

LARGEST CRANKSHAFT RANGE

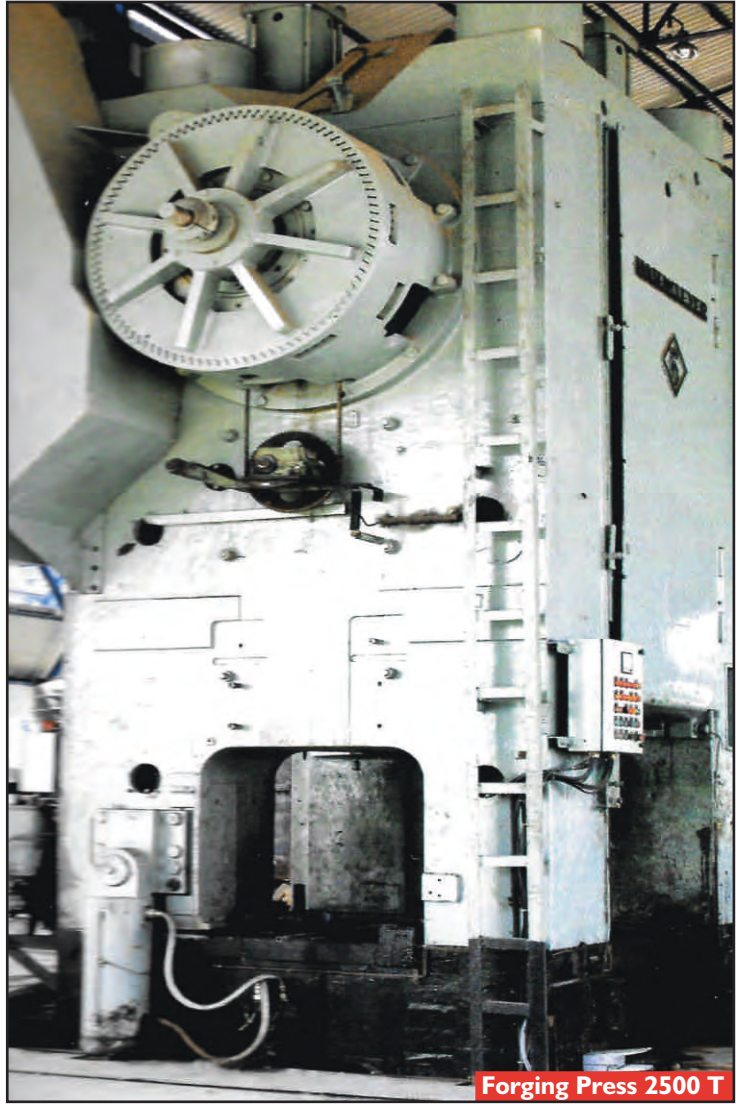


CRANKSHAFT | CIGÜEÑAL | WAŁ KORBOWY | КОЛЕНЧАТЫЙ ВАЛ | VIRABREQUIN | ARBORE MOTORE | VILEBREQUINS

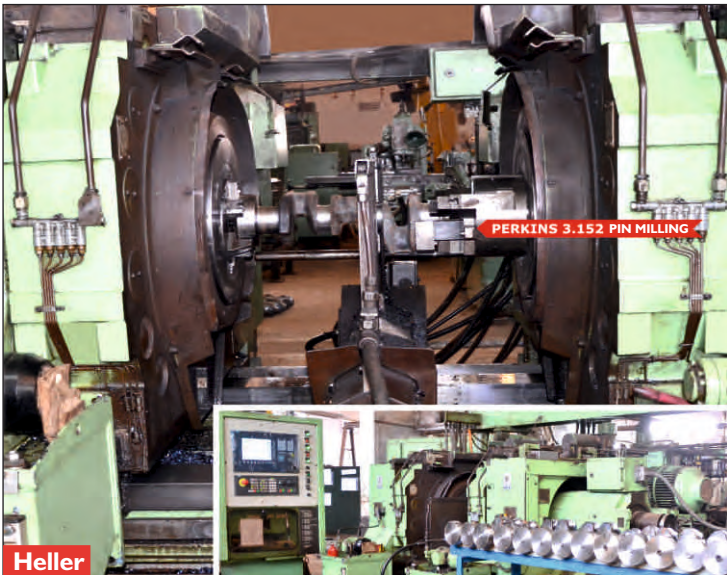
FORGED



Forging Press 4400 T



Forging Press 2500 T



PERKINS 3.152 PIN MILLING

Heller



Vertical Machining Center

Styr Plant I & 2





NO. 1 CRANKSHAFT MANUFACTURER

INTRODUCTION

STYR is a leading India based manufacturing company having two Hi-Tech Plants producing all types of Crankshafts. STYR has the largest Crankshaft range in the world. STYR is a Government of India approved Export House, ISO 9001:2015 Accredited and holding SONCAP Certification. STYR is a preferred and reliable supplier to selected OEM's and also to more than 75 countries spread all over the world.

CRANKSHAFT RANGE

Manufacturer Of All Types Of Heavy Duty Multi-Cylinder Crankshafts
Suitable For:
Tractors, Trucks, Automobiles, Industrial Engines, Compressors, Etc.

INSTALLED CAPACITY

72,000 Units Per Annum

HI-TECH CRANKSHAFT PRODUCTION LINE

- CNC Mass Centering And Facing Centers
- Heller Pin Milling Center
- CNC Machining Centers
- AEG Elotherm Induction Hardening Unit
- CNC Grinders
- HMC Heavy Duty Centers
- VMC Heavy Duty Centers
- Dynamic Balancing Machines
- Nagel Auto Lapping Super Finishing Unit

QUALITY CONTROL

- All Crankshafts Manufactured And Inspected Using Hi-Tech Quality Control Systems
- In-House Bruker Germany Spectrometer Unit For Material Analysis
- All Crankshafts Magnafluxed
- STYR Plants :- ISO 9001:2015 Accredited



NEW CRANKSHAFT DEVELOPMENT

- Fully Equipped To Undertake Any New Crankshaft Development.
- Inhouse Tool Room and Pattern Shop With CAD/CAM Facility.

STYR WARRANTY

We guarantee that all crankshafts manufactured by us are free from all types of defects. In case of any fitment defect we confirm to replace the defective crankshaft free of cost. 'Styr' liability will be restricted only to the replacement of crankshaft and shall not include payment of any type of compensation towards any consequence(s) arising on account of fitment of any defective crankshaft.

STYR DISCLAIMER

All Manufacturer's Symbols, Numbers And Descriptions Are Used In This Catalogue For Reference Purpose Only And Do Not Imply That Any Part Listed Is The Product Of These Manufacturer's.



A

Allis Chalmers	1
Armstrong Siddley	1
Andoria	16

B

Badsun - Iran Model	1
Bedford	1
Belarus - MTZ - JUMZ	1
BMC - Morris Oxford	1
BMW	1

C

Case International Harvester	1-2
Caterpillar	2-3
Continental	3
Cummins	3

D

Daihatsu	3
Deutz	3-4
David Brown	4

F

Fiat	4
Fiat - Iveco	4-5
Ford - Ebro	6-7
Fordson - New Holland	6-7

G

General Motors	7
----------------	---

H

Hatz	7
Hino	7

I

IIFA W50	7
India Crankshaft Range	16-17
Isuzu	7

J

JCB	7
Jeep Willys - Ford GPW	8
John Deere	8-9

K

Kubota	9,16
--------	------

L

Lada	9
Landrover	9
Leyland	9
Lombardini	9-10

M

M.A.N	10
Mazda - Kia	10
Mercedes Benz	10
Mitsubishi - Hyundai	10-11
MWM Series	11

N

Navistar	11
Nissan	11

P

Perkins MF - Landini	11-14
Perkins IMT - IMR	14
Peugeot	14

R

Renault	14
Russian "T/D" Series VTZ	14

S

SMD - JUMZ	15
Solis Sonalika	15
Steyr	15
Suzuki	15

T

Toyota	15
Tata	15
Tumosan	15
TVS - 3 Wheeler - Nigeria Model	15

U

Ursus	15
UTB - Romania	15

Y

Yamaha	16
Yanmar Series - Yemen Model	16

Z

Zetor	16
ZTS	16

SE REF	ENGINE #	PART #	DESCRIPTION
ALLIS CHALMERS			
1654	G 226 226 C.I.D. 70226535	70226535; 70213353; U-3986; 70226526; 70229022; 70241291	SUPER 100, 170 & 175 GAS, W226, 3.7 LITER TRACTORS: WD45 GAS 4 CYL. WHEEL LOADERS: TL10 #638-1800; TL11 THRU #73; TL12 THRU #1281
1665	540	172 DIESEL	WITH BALANCER GEAR
1675	160; MF 3 CYL.	R 1197987; DIESEL 90814233	MASSEY FERGUSON 35,50,150 GAS AND DIESEL
1822	TRACTOR 6040 TRACTOR 160 WITH AD3.152. ENGINE	70280077	SPLINED NOSE, ROPE SEAL. 3 CYL.
1976	ACS073	OEM # 227550, 70227550	MODEL D10, D12, D14, D15, H3, I400, I600, 600. 4 CYL. GAS
ARMSTRONG SIDDLEY			
1507	2 CYL.	20 H.P.	WITHOUT COUNTER WEIGHT
BADSUN - IRAN MODEL			
1946	BADSUN	135 TI; 110 TI. HEAVY WEIGHT FORGING	NEW 1004.4T. IRAN MODEL. 4 CYL.
BEDFORD			
1556	J-4 220		4 CYL.
1122	J-6 330		6 CYL.
BELARUS - MTZ - JUMZ			
1570	D-240 MTZ-80; MTZ-82	240-1005020-51; 80 HP	WITH SEPARATE COUNTER WEIGHT 4 CYL.
1711	MTZ 70 NEW D-65; JUMZ-6KL; JUMZ-6KM	D03-c08-A; 70 HP M-85.17; C-75.17	OIL SEAL : 1/2 THREADING; 1/2 KNUURLING
1751	MTZ 70 OLD JUMZ D-65	240-1005020-51; 80 HP	OIL SEAL : FULL THREADING EGYPT MODEL
BMC - MORRIS OXFORD			
1113	MORRIS OXFORD	IH 753. 4 CYL.	O.H.V. PETROL
1114	BMC 1.5 AUSTIN	12H533. 4 CYL.	BRITISH LEYLAND U.K.
1115	BMC 1.5 SAVA	37D212; 80476. 4 CYL.	3.013 BMC
1531	BMC 154	37D812. 4 CYL.	AUTOLAND 154 TRACTOR
1704	AMBASSADOR	12H165. 4 CYL.	SPORTS ENGINE APPLICATION
BMW			
1892	BMW N55 ENGINE	# 11212163665	
CASE - INTERNATIONAL HARVESTER			
1141	3110995R91 D154, 154 C.I.D. 2.5 LITER D165, 165 C.I.D. 2.7 LITER D171, 171 C.I.D.	3110995R91; 05700AB; 751303;	BD154, 144, 364, 384, 444 TRACTORS 2424, S, SC, SE TRACTORS 780, 880, 885, 4600 TRACTORS 4 CYL.
1161	3144626R91 D239 239 C.I.D. 3.9 LITER	3144626R91; 015C1; 3132752R3; 015C1 1089; 3144626; 182752R2; 37CR4; 2744406R1; IH625R2	544, 574, 624, 654, 674, 684, 685 BACKHOE 685 TRACTOR, TD7, TD7E, TD8C CRAWLER TRACTORS, TD8 DOZER AVAILABLE WITH : BALANCER GEAR RING; NOSE GEAR 4 CYL.
1162	D206 TRACTOR 654 ENGINE 3132968R93 D206 554, 584,	3132968R91; 3132968R93; 1329196CI	AVAILABLE WITH : BALANCER GEAR RING; NOSE GEAR 4 CYL.
1571	300, 310 GAS	G11700; R1204916	CA 300; 93016233
1598	D268 EARLY MODEL 3228376R91 268 C.I.D. 4.4 LITER	3228376R91; 218528R1; 218528R2; 218528R3; 528R2-79; A09-7292; 3.218528R1	510B LOADER NEUSS DIESEL AVAILABLE WITH : BALANCER GEAR RING; NOSE GEAR 4 CYL.
1655	A39150 188 BUSHING 188 C.I.D. 3.1 LITER 4 CYL.	A39150; 976321; A39151; G-11740; G-11741 CASE 188 SMOOTH PILOT CRANK	430, 440, 441, 470, 480, 504, 530, 570, 580, 580B, 630, 640 WHEEL TRACTORS, W3, W5A, 480C, 580C, 1845 WHEEL LOADERS, 2504, 3514, 600, 660, COMBINES, 310E, 310F, 310G, 350, 450 CRAWLER TRACTOR, 1150 1155, 1255 WINDROWERS, H-25B
1656	A144011 207 NON TURBO 207 C.I.D. 3.4 LITER	A144011; 976321	350, 450, 450B CRAWLERS 580C, 580D WHEEL TRACTOR 4 CYL.
1657	CASE 336	251; A267; A2849; 301	NATURAL CRANK. 4 CYL.
1658	CASE G148		YEAR 1955 - 1970. 4 CYL.
1705	CASE 301		BIG CON. PINS. 4 CYL. AVAILABLE WITH BALANCER GEAR RING
1795	IHC GEAR	CRANKSHAFT NOSE GEAR	INTERNATIONAL HARVESTER

SE REF	ENGINE #	PART #	DESCRIPTION
CASE - INTERNATIONAL HARVESTER			
1800	A151015 188 SPLINED 188 C.I.D. 3.1 LITER 4 CYL.	A151015; 976321; A39151; G-11740; G-11741	430, 440, 441, 470, 480, 504, 530, 570, 580, 580B, 630, 640 WHEEL TRACTORS, W3, W5A, 480C, 580C, 1845 WHEEL LOADERS, 2504, 3514, 600, 660 COMBINES, 310E, 310F, 310G, 350, 450 CRAWLER TRACTOR 1150, 1155, 1255 WINDROWERS, H-25B
1807	D239	IH. 4 CYL.	CRANKSHAFT WITH BALANCER GEAR RING & NOSE GEAR
1817	1640; 1644. 6 CYL.	3907804	2144 COMBINES; CONSOLIDATED DIESEL
1823	D206 TRACTOR 624 ENGINE	3055787R92	AVAILABLE WITH : BALANCER GEAR RING; NOSE GEAR 4 CYL.
1824	D268 NEW MODEL	D268	AVAILABLE WITH : BALANCER GEAR RING; NOSE GEAR. 4 CYL.
1867	CASE IH 422/M2; 422T/M2; 422T/M3	CASE SKID STEERS 410; 420; 420CT	STROKE : 100 mm. 4 CYL.
1868	CASE IH 422/M2; 422T/M2; 422T/M3	CASE SKID STEERS 410; 420; 420CT	STROKE : 90 mm. 4 CYL.
1893	CASE NEW CRANKSHAFT	G126 Early G148 G11164, G11700, G11701, G10071	STROKE : 4.13". CON PIN DIA Ø : 1.9365" - 1.9375" MAIN JOURNAL DIA Ø : 2.6230" - 2.6240" NOTE : 1960 & EARLIER G148
1907	CASE IH	CASE IH JX1060C, JX55, JX60, JX65 8035.05, 8035.06	3 CYL.
1908	CASE IH	CASE IH AVJ70, JX75, JX80, JX85, JX90, JX95, VJ70, Vj80	4 CYL.
1918	IHC-CASE (CNH) F4L 912 D	20050591204	4 CYL. WITH SEPARATE COUNTER WEIGHT
1919	IHC-CASE (CNH) F6L 912 D	20050591206	6 CYL. WITH SEPARATE COUNTER WEIGHT
1938	J908031; J918323; 3929036 4 CYL.	3907803	CASE IH TRACTOR(S) 5120, 5220 CASE SKID STEER LOADER(S) 40XT, 60XT, 70XT, 75XT, 85XT, 90XT, 95XT, 1840, 1845C CASE CONSTRUCTION & INDUSTRIAL(S) CX130, CX160, W11B, 450C, 455C, 480F, 480FLL, 521D, 550, 550E, 550G, 550H, 570LXT, 570MXT, 580K, 580L, 580M, 580SE, 580SK, 580 SUPER L, 580 SUPER M, 584E, 585E, 585G, 586E, 586G, 588G, 590, 590 SUPER L, 590 SUPER M, 650, 650G, 650H, 650K, 660, 686G, 686G XR, 688, 688BCK (S/N 120301-LATER), 688C (S/N 10501-LATER), 688G, 750H, 750K, 760, 860, 960, 9010, 9010B, 9020, 9020B
1943	IH C-60	INTERNATIONAL IH C60 NEW REPLACES # 357247R1	4 CYL.
1958	NEW CASE	NEW CASE : G11183, A37210 • FITS CASE TRACTOR(S). • FITS CASE SKID STEER LOADER(S) • FITS CASE CONSTRUCTION & INDUSTRIAL(S) • FITS CASE ENGINE(S) : G148B, G159, G164 • REPLACES CASE OEM NOS. : G11183, A37210, 667731, A49018, G11708, G11709	
CATERPILLAR			
1605	1W9771 3204 318 C.I.D. 5.2 LITER	1W9771; 1W0400; OR1206; 4N0111; OR1209; 4N1111; OR5024; 4N111X; OR5164; 4N40012; OR5474; 6N8290; OR5560; 7N5137	D3, 910, 916, 926, 926E, 931 LOADER WHEEL LOADERS : IT12, IT14, IT18, IT28 4 CYL.
1651	1397018 3054 244 C.I.D. 4.0 LITER	1397018; 071Z724149; ZZ90082	416, 416C BACKHOE, CAT COMPACTOR : 426B, CB534, CB534B, CB534C, Cb545 FORKLIFTS : TH62, TH63, TH82, TH83, TH103, 4.236 PERKINS; 4 CYL.
1833	CAT FORKLIFT	PART # OR4508; ZZ90145	APPLICATION : CAT; HYSTER; YALE & CLARK FORKLIFTS NEW 1004.4T PERKINS; 4 CYL.
1855	NEW LATER 3054 MODEL NEW PERKINS 4.236;4.248	REPLACES : 7C8214; ZZ90082; 071Z724149; 1397018; ZZ90145	4 CYL.
1857	CAT 3054C; PERKINS 1104	WITH TIMING GEAR RING WEB	SPLINED. LIP SEAL. 3 PULLEY. 10 + 1 FLANGE. 4 CYL.

SE REF	ENGINE #	PART #	DESCRIPTION
CATERPILLAR			
1869	3014 3024C	CAT SKID STEERS 216; 216B; 226B; 232; 232B; 242B	STROKE : 100 mm. 4 CYL.
1870	3014 3024C	CAT SKID STEERS 216; 216B; 226B; 232; 232B; 242B	STROKE : 90 mm. 4 CYL.
1871	3056	REPLACES OEM # 1930159	WITHOUT MOUNTING FOR RELUCTOR / TIMING GEAR. 6 CYL.
1872	3056E	REPLACES OEM # 1930159	WITH SEPARATE TIMING GEAR MOUNTING PROVISION. 6 CYL.
1873	3056E - TIMING GEAR	3116L002/159	ONLY TIMING GEAR
1904	3304 425 C.I.D. 7.0 LITER 4 CYL.	# 4N7692	112F, 120G, 130G MOTOR GRADER, 215, 225 EXCAVATOR, 518 SKIDDER 920, 930, 955L, 963 LOADER 922B, 944, 950. WHEEL LOADER 941, 941B, 951, 951B TRAXCAVATOR 951C, 955K, 955L TRAXCAVATOR CRAWLER TRACTOR, INDUSTRIAL, MARINE TRUCK, VEHICULAR
1932	3054 NEW LATER VERSION	LONG WEB CRANKSHAFT	SPLINED. 3 PULLEY HOLES. LIP SEAL. 6 FLANGE HOLES. 4 CYL.
1933	3054C / E. C4.4T. C4.4T / TA NEW LATER VERSION	LONG WEB CRANKSHAFT NATURALLY ASPIRATED / TURBO	SPLINED. 3 PULLEY HOLES. LIP SEAL. 10+1 FLANGE HOLES. WITH SEPARATE TIMING RING. 4 CYL.
1934	3054C / E. C4.4T. C4.4T / TA TIMING RING	LONG WEB CRANKSHAFT NEW LATER VERSION	LOOSE TIMING RING.
1950	CATERPILLAR 1004	PART # 2327400-ZZ90239	KEYED - 3 PULLEY HOLES. FLANGE: 10 HOLES, 1 DOWEL. 4 CYL.
1951	CATERPILLAR 1104	PART # ZZ90237	KEYED - 3 PULLEY HOLES. FLANGE: 10 HOLES, 1 DOWEL. 4 CYL.
1952	CATERPILLAR C4.4 INDUSTRIAL ENGINE	PART # 359-0715; 174792 MODEL : C4.4 ENGINE - MACHINE 444 CONFIGURATION : C4.4 INDUSTRIAL ENGINE 44400001-UP PRODUCT : ENGINE - MACHINE MIDDLE NUMBER - RENR9961-02	KEYED - 3 PULLEY HOLES. FLANGE : 10 HOLES, 1 DOWEL WITH TIMING RING FITMENT WEB. LOOSE TIMING RING AVAILABLE. 4 CYL.
1953	PERKINS 1106	PERKINS # ZZ90228	NITRIDED. WITH SEPARATE TIMING RING. 6 CYL.
1954	PERKINS 1106	PERKINS # ZZ90229	NITRIDED. 6 CYL.
1964	PERKINS / CATERPILLAR TIMING GEAR WEB	PERKINS, CATERPILLAR 1104-SRS, 3054C, 3054E CRANKSHAFT PART # ZZ90239, 232-7400, ZZ90222, ZZ90239, 072-156, 072-106, 072-140	3 PULLEY HOLES. 10+1 FLANGE HOLES. 4 CYL.
CONTINENTAL			
1652	830686M91 Z134 - GAS 134 C.I.D. 2.2 LITER	830686M91; Z129C205; Z129C500; Z134C500 Z129; Z134; 1750169M1	GAS Z134, MF35, MF135 4 CYL.
1653	Z120; MF T020	MFT020; 47120042; A716357	
1949	CONTINENTAL Z145	1047539M1, Z145C500, Z145C600	GAS MF135, MF150, MF230G, MF235G, MF245G, MF2500. 4 CYL.
1960	MFS076	G-176 PART # 830756M91; # G176C300	CONTINENTAL GAS ENGINE
1961	ACS131	ENGINE N-62. N-56	CONTINENTAL ENGINE
1977	MFS063	OEM : 1047539M1, Z145C500, Z145C600	MODEL : 135, 150, 230, 235, 245 WITH Z145 CONTINENTAL ENGINE. 4 CYL.
CUMMINS			
1816	6BT	3907804	6 CYL.
1874	4B, 4BT, 4BTA	3907803;3908031,3929036, 390382	4 CYL.
DAIHATSU			
1504	DAIHATSU DG	88.0 mm. DIESEL 2530 CC. DELTA	EGYPT MODEL. 4 CYL.
DEUTZ			
1194	F4L 912 229 C.I.D. 3.8 LITER	02138819; 02929340; 04152903; 20 0505 91204	6240, 6250 4 CYL. WITH SEPARATE COUNTER WEIGHT
1195	F6L 912	02929342; 04151011; 2136993; 2136932; 20 0505 91206	6 CYL. WITH SEPARATE COUNTER WEIGHT
1502	F3L 912 172 C.I.D. 2.8 LITER	02929338; 04152646; 210556; 2136928; 20 0505 91203	6240, 6250 3 CYL. WITH SEPARATE COUNTER WEIGHT
1603	F1L 511	02233635	1 CYL. WITH SEPARATE COUNTER WEIGHT

SE REF	ENGINE #	PART #	DESCRIPTION
DEUTZ			
1604	F4L 912	02929339; 20 0505 91214	4 CYL. WITH SEPARATE COUNTER WEIGHT AVAILABLE WITH BALANCER GEAR
1689	F2L 912 D/W	02232854; 02929337; 04152591; 3371552; 20 0505 91202	WITHOUT COUNTER WEIGHT
1708	F2L 511 D/W	04152745; 20 0505 51102	2 CYL. WITH SEPARATE COUNTER WEIGHT
1826	F2L 511 D/W	04152745; 20 0505 51102	2 CYL. WITH INTEGRATED COUNTER WEIGHT
1865	F6L 913	02139148; 02931056; 20 0505 91300	6 CYL. WITH SEPARATE COUNTER WEIGHT
1866	BF6L 913/C/T	02929345; 02139405; 20 0505 91301	6 CYL. WITH SEPARATE COUNTER WEIGHT
1875	F3L 912 172 C.I.D. 2.8 LITER	02929338; 04152646; 210556; 2136928; 20 0505 91203	6240, 6250 3 CYL. WITH INTEGRATED COUNTER WEIGHT
1876	F4L 912 229 C.I.D. 3.8 LITER	02138819; 02929340; 04152903; 20 0505 91204	6240, 6250 4 CYL. WITH INTEGRATED COUNTER WEIGHT
1877	F4L 913	04151013; 02931050; 20 0505 91304	4 CYL. WITH SEPARATE COUNTER WEIGHT
1891	DEUTZ	# BF6M1013	WITH FLANGE GEAR & CRANK FLANGE
DAVID BROWN			
1174	DB 4/49 AD 4/49	K962224; K917985; 4 CYL.	FITS 990 LATE S/N
1175	DB 4/55. AD 4/55. DB 219 ENGINE	K962147; K905196; K210100 4 CYL.	FITS 990 SELECTOMATIC; 995; 996; 1200; 1210; 1212; 1290; 1294; 1390; 1394; 1400
1558	DB 3/55	K961726; K912017 3 CYL.	FITS 780; 785; 880; 885; 1190; 1194; 380CK WITH SEPARATE COUNTER WEIGHT
1650	4/55T DB219T	K963412; K928415 4 CYL.	TURBO CHARGED ENGINES FITS 1394; 1410; 1412; 1490; 1494
1804	DB 4/49; AD 4/49	LIBYA MODEL; 4 CYL.	SHORT STROKE
1825	DB 4/47 AD 4/47	K961007; K908453; 4 CYL.	FITS 990 IMLEMATIC; 990A; 990B
1971	PART # K914788	PART # K914788 FITS TRACTORS 1594, 1690	6 CYL.
FIAT			
1532	FIAT 1100	BA869699	4 CYL.
1663	DAILY ENGINE	8140.61; 8140.21; 8140.67	
1715	ALFA ROMEO 1.8		
1716	ALFA ROMEO 2.0		
1717	FIAT 1.3 DIESEL		1.3 DIESEL
1718	DAILY ENGINE		MAIN JOURNAL DIA Ø : 80 mm. CON PIN DIA Ø : 56 mm. FLANGE DIA Ø: 114 mm. 4 CYL.
1719	DAILY ENGINE		MAIN JOURNAL DIA Ø : 76 mm. CON PIN DIA Ø : 56 mm. FLANGE DIA Ø : 100 mm. 4 CYL.
1799	FIAT 1.3	FIRE ENGINE	GASOLINE
1973	FIAT 1.3L	OE PART # 4442701	FLANGE HOLES : 6
1974	FIAT 1.3 MULTIJET.	OE PART # 55200307.	
FIAT - IVECO			
1173	480, 474V, 480S, 500S, 540 3 CYL.	4785106	7 FLANGE HOLES
1758	FIAT 4 CYL.	6B 640-640 DT	MAIN JOURNAL DIA Ø : 76.2 mm. CON PIN DIA Ø : 58.75 mm. STROKE : 110 mm. FLANGE : 110 mm. FLANGE HOLE : 07.
1786	3 CYL.	EGYPT-ALLIS & ROMANIA. 3 CYL	SYRIA-FRSAN. 95 mm
1819	600; 640; 550; 666; 670; 680	4653287	6 FLANGE HOLES
1859	FIAT 750 TRACTOR	OM55 CO3; 4707125; 8818711	4 CYL.
1864	FIAT OM55 CO3	STROKE : 140 MM	4 CYL.
1878	8040.05	98461244	MAIN JOURNAL DIA Ø : 76.2 mm. CON PIN DIA Ø : 58.75 mm. STROKE : 110 mm. FLANGE : 95 mm, 6 FLANGE HOLES. SHORT WEB. 3 CYL.
1894	# 4785106 3 CYL. [Old Ref : SE 1758]	TRACTOR 480, 480S, 540, 8035-01/02/04, 8030-02	<u>TECHNICAL SPECIFICATIONS :</u> MAIN JOURNAL DIA Ø : 76.20 mm CON PIN DIA Ø : 58.75 mm STROKE : 110 mm FLANGE : 110 mm. 7 HOLES

SE REF	ENGINE #	PART #	DESCRIPTION
FIAT - IVECO			
1902	FIAT 3 CYL.	FIAT TRACTOR : 4785111, 98461246, 5088486, 99464932 55.46 / 55.56 / 54C / 60.56 <u>TECHNICAL SPECIFICATIONS :</u> MAIN JOURNAL DIA Ø : 79.8 mm CON PIN DIA Ø : 63.75 mm THROW : 115 mm FLANGE : 114 mm / 7 HOLES	FIAT AGRICULTURAL TRACTOR 46 SERIES : 55-46, 60-46 56 SERIES : 55-56, 60-56 65 SERIES : 55-65, 60-65 66 SERIES : 45-66, 50-66, 55-66, 66 SERIES : 56-66, 60-66 75 SERIES : 55-75, 60-75 76 SERIES : 45-76, 55-76, 60-76 85 SERIES : 55-85, 60-85, 62-85 86 SERIES : 55-86, 62-86 88 SERIES : 55-88, 60-88 90 SERIES : 55-90, 60-90 93 SERIES : 60-93 94 SERIES : 60-94 L SERIES : L60
1903	FIAT 4 CYL. [Old Ref : SE 1760]	FIAT # 4785304, 4785110, 98451529, 5088487 8045.05 TRACTOR 65.46/70.56/70.66/80.66/8090 TUMOSAN <u>TECHNICAL SPECIFICATIONS :</u> MAIN JOURNAL DIA Ø : 79.791 mm CON PIN DIA Ø : 63.744 mm STROKE : 115 mm FLANGE : 114 mm. 7 HOLES	<u>AGRICULTURAL TRACTOR</u> 66 SERIES : 65-66, 70-66, 80-66 76 SERIES : 70-76, 80-76 90 SERIES : 65-90, 70-90, 80-90, 85-90 93 SERIES : 65-93, 72-93, 82-93, 88-93 94 SERIES : 65-94, 72-94, 82-94, 88-94 L SERIES : L65, L75, L85, L95
1909	FIAT 450 3 CYL.	TRACTOR 4653850, 4602840, 1930130 8030.00 / 8035.01 <u>TECHNICAL SPECIFICATIONS :</u> MAIN JOURNAL DIA Ø : 76.2 mm CON PIN DIA Ø : 58.75 mm STROKE : 110 mm FLANGE : 95 mm. 6 HOLES WEB GROVE ON 4th MAIN JOURNAL DIA Ø FOR MIDDLE EAST MARKET	UTB 445/450 TRACTOR UNIVERSAL FARM LINER TRACTOR CRANKSHAFT EGYPT-ALLIS. SYRIA-FRSAN <u>AGRICULTURAL TRACTOR CLASSIC MODELS</u> 446,450,466,470,480,500,540
1910	FIAT 4 CYL.	FIAT 4653287 : 50 NC LORRY - VAN 8040.02 <u>TECHNICAL SPECIFICATIONS :</u> FLANGE : 95 mm FLANGE : 6 HOLES	<u>FIAT AGRICULTURAL TRACTOR - CLASSIC MODELS</u> 550, 600, 640, 666, 670, 680
1911	FIAT 4 CYL. [Old Ref: SE 1759]	IVECO : 98451527,098449226,504075031 EURO CARGO 199101 ZETA 197901-199212 50.9-65.12 ZETA/65E10-75E12, 50NC; 85.12 / 65.9 / 35.9 8040.05	<u>TECHNICAL SPECIFICATIONS :</u> MAIN JOURNAL DIA Ø : 79.8 mm CON PIN DIA Ø : 63.75 mm STROKE : 115 mm FLANGE : 114 mm. 7 HOLES
1912	FIAT 4 CYL. [Old Ref : SE 1859]	FIAT 4707125, 8818711 <u>FIAT AGRICULTURAL TRACTOR</u> <u>CLASSIC MODELS</u> 750 TRACTOR OM 55 CO3	4 CYL.
1913	FIAT OM 55 CO3 4 CYL. [Old Ref : SE 1864]	FIAT OM 55 CO3	WITH POLO HOLES THROW : 2.561" 7 FLANGE HOLES
1914	FIAT 4 CYL. [Old Ref : SE 1173]	FIAT 4785104 : FIAT 640 TRACTOR 50 NC LORRY-VAN; 8040.02/04 <u>FIAT AGRICULTURAL TRACTOR</u> <u>CLASSIC MODELS</u> 640, 666, 680, 766, 780	<u>TECHNICAL SPECIFICATIONS :</u> MAIN JOURNAL DIA Ø : 76.20 mm CON PIN DIA Ø : 58.737 mm STROKE : 110 mm FLANGE : 114 mm. 7 HOLES

SE REF	ENGINE #	PART #	DESCRIPTION
FORD - EBRO - FORDSON - NEW HOLLAND			
1132	EIADDN6303F 220 220 C.I.D. 3.6 LITER	EIADDN6303F; E1ADDNN-6303-D; E1ADDN6303F. FORD THAMES. MAJOR 4D, 592 E E1ADDNN-6303-E	FORDSON MAJOR DIESEL & SUPER MAJOR FORDSON POWER MAJOR, FORDSON SERIES D, 4000 SERIES TRACTORS, EARLY MAJOR, FORDSON 5000 SUPER MAJOR. 4 CYL.
1133	FORD SERIES D	713F-6303-AAA; 2701E-6303	INDUSTRIAL. 4 CYL.
1134	C5NE6303K BSD442 4.2 STROKE 256 C.I.D. 4.2 LITER 78 TEETH GEAR	C5NE6303K; 6110A FINIS 81804029	MAJOR 5000, 7000, SUPER MAJOR 5000, 5100, 5190, 5200, 5500, 5550, 5600, 5610, 5700, 6000, 650, 655, 6500, 6600, 6610, 6700, 6710 WHEEL TRACTORS: 7000, 7100, 7200, 7500, 7600, 7610, 7700, 7710 COMBINES: 620, 622 LOADERS: A62, 750, DORSETT. 4 CYL.
1137	E0NN6303AA BSD329 4.2 STROKE 175 C.I.D. 2.9 LITER 3 CYL.	E0NN6303AA; C5NE6303L; C5NE6303R; C5NE6305; EN438; E5NN-63038-A	2000, 2100, 2110, 2120, 2300, 230A, 2310, 234, 2610, 2910, 3000. SUPER DEXTA, 3055, 3100, 3110, 3120, 3150, 3190, 3230, 3300, 3310, 333, 3330, 335, 336, 340, 340A, 3400, 3500, 3550, 3600, 3610, 3900, 3910 GAS 4000 SERIES
1159	FONN6303MA BSD333 4.4 STROKE 201 C.I.D. 3.3 LITER 3 CYL.	FONN6303MA; C5NE6303N; C5TE6303; E5NN6306N	3930, 3930H, 3930N, 4000, 3930NO, 4000 MAJOR, 4100, 4110, 4130, 4130N, 4130NO, 4140, 4190, 4200, 4330, 4340, 4400, 4410, 4500, 4600, 4600SU, 4610, 4610SU, 4630, 260C, 455, 455C, 455D, 515, 530A, 531, 532, 535, 540, 540A, 540B, 545, 545A, 545C, 550, 555, 555A, 555B SKID LOADERS: L783, L785
1160	E5NN6303FA BSD444 4.4 STROKE 268 4.4 LITER 76 TEETH GEAR	E5NN6303FA; D9NN6110AA; D9NN6303A; D9NN6303AA; E5NN6303CA; D5NN6303FA FINIS 83956298; 83918890 444 LATE - AFTER 9/4/1986	655, 6600, 6610, 6700, 7000, 7100, 7200, 7500, 7600, 7610, 7700, 7710 LOADER A62, DORSET DIESEL 4 CYL.
1163	TRANSIT	894 F 6303 AB	4 CYL.
1197	FORDSON	510 E/R; 5081E63038	6 CYL.
1574	EZJL6300BA 172D 172 C.I.D. 2.8 LITER	E2JL6300BA; B9NN6302B; EZJL6300BAI; UF17095; B9NN6303B	INDUSTRIAL ENGINES : (55-78); TRACTORS: 601, 801, 901, 2000 SERIES, 1801 SERIES, 4000 SERIES, WHEEL LOADERS: 540. ALLIS CHALMERS CS 34. WITH BALANCER GEAR. DIESEL. 4 CYL.
1575	FORD 172	UF17090; D4JL6300B; D1NL6300B; D1NL6303D; D1NN6300B; CONN6303J	GAS. 4 CYL. JUBILEE, NAA, 600, 601, 700, 800, 801, 900, 901, 2000, 4000
1593	E5NN6303DA BSD444 4.4 STROKE 268 4.4 LITER 78 TEETH GEAR	E5NN6303DA; D9NN6110AA; D9NN6303A; D9NN6303AA; E5NN6303CA; D5NN6303FA E5NN6303FA; FINIS 83956298; 83918890	655, 6600, 6610, 6700, 7000, 7100, 7200, 7500, 7600, 7610, 7700, 7710 LOADER A62, DORSET DIESEL 4 CYL.
1597	FORDSON		SANZ TYPE. KEYED NOSE. LATE MAJOR. 4 CYL.
1664	C5NE6303K BSD442 4.2 STROKE 256 C.I.D. 4.2 LITER 76 TEETH GEAR	C5NE6303K; 6110A 442 LATE - AFTER 9/4/1986	MAJOR 5000, 7000, SUPER MAJOR 5000, 5100, 5190, 5200, 5500, 5550, 5600, 5610, 5700, 6000, 650, 655, 6500, 6600, 6610, 6700, 6710 WHEEL TRACTORS: 7000, 7100, 7200, 7500, 7600, 7610, 7700, 7710 COMBINES: 620, 622 LOADERS: A62, 750, DORSETT. 4 CYL.
1779	FORD 4.9		6 CYL.
1805	EBRO TRACTOR		LIBYA MODEL. SPLINED. LIP SEAL. 6 CYL.
1821	6640	6640. BIG THROW	AVAILABLE WITH SEPARATE BALANCER GEAR. 4 CYL.
1827	C5NE6303K 4.2 STROKE 78 TEETH GEAR	442 EARLY - PRIOR TO 9/4/1986	WITH REDUCED BALANCER GEAR WIDTH TEETH 4 CYL.
1828	E5NN6303DA 4.4 STROKE 78 TEETH GEAR	444 EARLY - PRIOR TO 9/4/1986	WITH REDUCED BALANCER GEAR WIDTH TEETH 4 CYL.
1858	LEHMAN 2700 SERIES DIESEL ENGINES SUITABLE FOR ALL FORD LEHMAN MARINE	CROSS REF VALID CRANKSHAFTS FOR THE 2712E : 713F6303-AAA; 826F6030-DAA; 826F-6030-DBA; 6106523; 6077423; 1606655	FORD SABRE MARINE CONVERSION OF THE LEHMAN DORSET 2712E DIESEL ENGINE 4 CYL.
1879	SHIBAURA N844L; N844LT	NEW HOLLAND SKID STEERS C175; L175; L218; L220	STROKE : 100 mm. 4 CYL.
1880	SHIBAURA N844L; N844LT	NEW HOLLAND SKID STEERS C175; L175; L218; L220	STROKE : 90 mm. 4 CYL.

SE REF	ENGINE #	PART #	DESCRIPTION
FORD - EBRO - FORDSON - NEW HOLLAND			
1915	FORD NEW HOLLAND	FORD NEW HOLLAND : # 4785111, 98461246 ENGINE : 60/65/80 8035.05, 8035.06 MODEL : 8040 30 SERIES : 3830, 4030 35 SERIES : 3435, 3935, 4135, 4635 TD SERIES : TD60 TL SERIES : TL65 TN SERIES : TN55, TN65, TN70, TN75, 3010S, 4010S, 5010S, TD55D, TD60D, TD65D, TN60A	3 CYL.
1916	FORD NEW HOLLAND 4 CYL.	FORD NEW HOLLAND 4785110	FORD NEW HOLLAND 30 SERIES : 4230, 4430 35 SERIES : 4835, 5635, 6635, 7635 TD SERIES : TD80, TD90 TL SERIES : TL100, TL70, TL80, TL90 5010S, TD75D, TD80D, TD85D, TN65F, TN70F, TN75F, TN75FA, TN80F, TN85FA, TN95F
1941	FORD 158 158 C.I.D. 3 CYL	DIESEL 2000, 3000 SERIES TRACTORS WITH 158 CID ENGINE FORD 2600, 3600	FORD 158 IS HAVING SPECIAL STROKE
1947	E5NN6303FA	FORD CRANK BALANCER RING	STROKE : 4.4. 76 GEAR TEETH. LOOSE
1948	FORD NEW HOLLAND TRACTOR SERIES 40 SERIES TS; TS110	81863553, 81865630, 81869022, 83998221, 83999541, 87800523, E9NN6303CB, E9NN6303DA, F0NN6300CA, F0NN6300CB, F0NN6300HA	5640, 6640, 7740. BIG THROW. 4 CYL. AVAILABLE WITH SEPARATE BALANCER GEAR RING
GENERAL MOTOR			
1567	SATURN	U.S. MODEL	4 CYL.
1761	CORSA 1.6	90400074	1600 CC. 4 CYL.
HATZ			
1895	HATZ # 735	# 735	3 CYL.
1896	HATZ # 855	# 855	3 CYL.
1970	HATZ # 735 XL	# 735 XL	3 CYL.
HINO			
1188	HINO DS 70		HEAVY DUTY. THICK FLANGE. 6 CYL.
1762	MODEL H07D	HINO CARGO	6 CYL.
1763	HINO 4 CYL. 105.50 KGS.	GEAR FACE HOLES : 6 + 1 FLANGE HOLES : 8 + 1	MAIN JOURNAL DIA Ø : 99.898 mm. CON PIN DIA Ø : 89.916 mm. CON PIN DIA Ø WIDTH : 88.000 mm. THROW : 70.000 mm. WITH SEPARATE COUNTER WEIGHT: 6
1764	HINO EF750 4 CYL. 103.80 KGS	GEAR FACE HOLES : 4 + 1 FLANGE HOLES : 6 + 1	MAIN JOURNAL DIA Ø : 109.900 mm. CON PIN DIA Ø : 83.900 mm. CON PIN DIA Ø WIDTH : 77.000 mm. THROW : 71.000 mm. WITH SEPARATE COUNTER WEIGHT: 8
1829	MODEL 6E	F3349611	6 CYL.
1881	HINO WO4D	WO4D	4 CYL.
1882	HINO WO6D	WO6D	6 CYL.
IFA W50			
1923	IFA W50	IFA W50 COMMERCIAL VEHICLE ENGINE. COUNTRY : GDR	4 CYL. FITTED WITH 4 SEPARATE COUNTER WEIGHTS
ISUZU			
1725	ISUZU 4BC2	5-12310-161-0	EGYPT MODEL. 4 CYL.
1777	ISUZU	6VD1	6 CYL.
1796	ISUZU	6VE1	6 CYL.
1925	ISUZU 4BG1	8-97112-981-2	4 CYL.
1926	ISUZU 4HF1	8-97033-171-2	4 CYL.
1962	ISUZU	# 4BD1/4BD1-T / 4BD2-T PART # 8-12310-163-0 / 5-12310-189-1	4 CYL.
1972	ISUZU # 4BE1	# 4BE1 PART # 8-94416-373-2	4 CYL.
JCB			
1920	JCB 4 CYL.	MODEL YEAR 2012 ONWARDS.	# 2 DA 50866 / 50906
1969	JCB	#320 / 03336, 444 ENGINE. TURBO	CRANK CASE BORE 103 MM. 4 CYL.

SE REF	ENGINE #	PART #	DESCRIPTION
JEEP - WILLYS MB - Ford GPW			
1139	CJ 3B	647078	WITH SEPARATE COUNTER WEIGHT. 4 CYL.
1788	Willys MB. Ford GPW	Engine L4-134. Model With Cylindrical Rear Center	WITH INTEGRATED COUNTER WEIGHT. 4 CYL.
1980	Willys MB. Ford GPW	Engine L4-134. Model With Conical Rear Center	WITH INTEGRATED COUNTER WEIGHT. 4 CYL.
JOHN DEERE			
3 CYL. Crankshafts			
1168	AT18031 3-152, 152 C.I.D. 2.5 LITER 3-164, 164 C.I.D. 2.7 LITER 3-179, 179 C.I.D. 2.9 LITER	AT18031; T2351C; T23516; T23516T; T23517T	1020, 1030, 1040, 1120, 1130, 1140, 1520, 1530, 1630, 2020, 2040, 2150, 2155, 2240, 2255, 2355NCS, 2355NTSS, 300, 300A, 300BT, 301, 3018, 302A, 3029, 3029D, 310, 350 3 CYL.
1685	RE50979 3-179 3029 POWER TECH 179 C.I.D. 2.9 LITER	RE50979; R101223 2 3/8" FROM END OF SNOUT TO GEAR	2155, 2355N, 2240, 5105, 5205, 5200, 5300, 5400, 5210, 5310, 5310N, 5410, 5510, 5510N, 5220, 5320, 5320N, 5400N, 5500N, 5420, 5420N, 5520, 5520N TRACTORS, 240, 250, 260, 270, 8875 SKID STEER LOADERS, 300 SERIES 3 CYL.
4 CYL. Crankshafts			
1171	RE20585 4-239 (LATE) ABOVE SN 769, 620 239 C.I.D. 3.9 LITER	RE20585; 23909; 97926; R121018; R81959 LONG SNOUT NOSE	2755, 6040, 4039, 190E EXCAVATOR 300D, 310C, 315C LOADER / BACKHOE 4 CYL.
1190	AT18030 4-202, 202 C.I.D. 3.3 LITER 4-219, 219 C.I.D. 3.6 LITER 4-239 (EARLY) BELOW SN 769, 619; 239 C.I.D. 3.9 LITER	AT18030; 23909; 97926; 97928; R23517; R81959; R94644; R979266; T23266; T23480T; T23517; T23517T; T28743T SHORT SNOUT NOSE	1640, 1830, 1840, 2020, 2030, 2040, 2100, 2120, 2130, 2250, 2270, 2280, 2320, 2355C2, 2355TSS, 2360, 2420, 2450, 244E, 2510, 2520, 2523, 2555C2, 2650, 2730, 2735, 2750, 2755CS, 2755TSS, 2850, 2855N, 290D, 310, 310B, 310C, 310D, 315C, 3300, 34, 3430, 3830, 401, 401A, 401B, 401C, 401D, 4020, 4030T, 4039D, 4039T, 400, 410, 410B, 515B, 44, 440, 440A, 440B, 450, 450A, 450B, 450C, 450D, 454, 455D, 480, 480A, 480B, 480C, 482C, 490, 499, 515B, 6040, 6200, 6300, 6602, 6620, 6622, 70, 70D 4 CYL.
1686	RE56792 4-276D,T 276 C.I.D. 4.5 LITER 4 CYL.	RE56792; R108657; R5450; R54501; R54501R	340D, 440C, 448D, 540B, 540D, 548D SKIDDER, 344E, 410C, 444E, 510B, 510C, 610, 610B, 610C, 650G LOADERS 450E, 450G, 455E, 455G, 550, 550A, 550B, 550G, 555, 555A, 555B, 55G CRAWLERS, 490D, 493D, 495D, 590D, 595, 595D EXCAVATOR, 2630, 2640, 6215, 6415
1687	RE54883,4045D, 4045T 276 C.I.D. 4.5 LITER	RE54883; R120009; R90825 LONG SNOUT NOSE	410D, 440G, 510D LOADER; 490E EXCAVATOR 540E SKIDDER, 548E GRAPPLE/SKIDDER 4 CYL.
1688	POWER TECH	RE50618	SNOUT NOSE : 4 HOLES. 4 CYL.
1744	4.5 POWER TECH STRAIGHT SNOUT NOSE	RE504638	TRACTORS: TC444H, 120, 210LE, 310E, 310G, 310SE, 310SG, 315SE, 315SG, 410E, 410G, 444H, 450G, 450H, 455G, 485E, 486E, 488E, 550G, 550H, 555G, 6410, 6410L, 650G, 650H, 5403, 5410, 5415, 5415H, 5420, 5420N, 5425, 5425N, 5510, 5510N, 5520, 5520N, 5525, 5525N, 5605, 5615, 5705, 5715, 5715HC, 6110, 6110L, 6120, 6120L, 6210, 6210L, 6215, 6220, 6220L, 6310, 6310L, 6310S, 6320, 6320L, 6403, 6405, 6410S, 6415, 6420, 6420L, 6510L, 6510S, 6520L. SKID STEERS: 260, 270, 280. SPRAYERS: 6700 4 CYL.
1745	4.5 POWER TECH TAPER SNOUT NOSE	RE506195	TRACTORS: 310J, 310SJ, 344H (SN800000>), 3800, 410J, 444J (TIER III SN 611275>), 450J (TIER III SN 159987>), 550J (TIER III SN 159987>), 650J (TIER III SN 159987>). EUROPEAN: SE6010, SE6020, SE6110, SE6120, SE6210, SE6220, SE6310, SE6320, SE6410, SE6420, 5415, 5510, 5510N, 5515, 5605, 5615, 5620, 5705, 5720, 5820, 6010, 6020, 6110, 6110L, 6120, 6120L, 6130, 6205, 6210, 6210L, 6215, 6220, 6220L, 6225, 6230, 6230 PREMIUM, 6310, 6310L, 6310S, 6320, 6320L, 6325, 6330, 6330 PREMIUM, 6405, 6410, 6410L, 6410S, 6415 (ENG SN 196071>), 6420, 6420L, 6420S, 6425, 6430, 6430 PREMIUM, 6510L, 6510S, 6520L BRAZIL: 5403 (ENG. SN 006876>) 4 CYL.

SE REF	ENGINE #	PART #	DESCRIPTION
JOHN DEERE			
6 CYL. Crankshafts			
1170	AT22562 6-303, 303 C.I.D. 5.0 LITER 6-329, 329 C.I.D. 5.4 LITER 6-359, 359 C.I.D. 5.9 LITER 6059D, T, A 359 C.I.D. 5.9 LITER	AT22562; A102; R108679; A102R; R26550; R26550R; F1910R; R40730; F2729R; RE45541; F2792R; T23264T; F3315R; T-23266; T23266T; F3560R; T23299T; F3561R; T23480T; R108658; T23517T	2840, 2940, 2950, 2955, 3120, 3130, 3140, 3150, 3155TSS, 4030, 4200, 4400, 4420, 4425, 444, 444C, 444CH, 444D, 499, 540, 540A, 540E, 540G, 544, 544A, 544C, 544D, 544E, 544G, 548E, 570, 570A, 570B, 710B, 710C, 710D, 6059D, 5049T, 699, 7484, 9900, 9910, 9920, 9930 6 CYL.
1742	RE504639 POWER TECH	RE515785; RE52850	STRAIGHT SNOUT NOSE 6 CYL.
1743	6.8 POWER TECH 6068HRW60; 6068HRW62 OR 6068HRW71 TIER II ENGINE 414 C.I.D. 6.8 LITER 2 OR 4 VALVE HEAD	RE505921	544J, 624J, 643J, 644J, 370D, 672D, 7130, 7220, 7320, 7230, 7330, 7420, 7520, 7630, 7720, 7730, 7820, 843J, COMBINE: 9550, 9550SH, 9560, 9560SH, 9560STS, 9570STS, COTTON PICKER: 9970, SPRAYER: 4720, 4720, 4830 TAPER SNOUT NOSE 6 CYL.
1850	6-414, 414 C.I.D. 6.8 LITER 6068D, T, 414 C.I.D. 6.8 LITER	RE45517	414, 414D, 544B, 544C, 544D, 624E, 624G, 640, 640D, 640E, 643, 643D, 648D, 648E, 648G, 653, 655B, 670, 670A, 670B, 672A, 672B, 690D, 690E, 693D, 750, 750B, 750C, 755, 755A, 755B, 790E. 6 CYL.
1860	6.8 POWER TECH	RE505124	6 CYL.
KUBOTA			
1559	GA-70, 7.5	TILLER. 1 CYL.	SRI LANKA MODEL
1596	RK-80	TILLER. 1 CYL. PLATE & SCREW	SRI LANKA MODEL
1695	L295, 295 DT TRACTOR	1532-23010	EGYPT MODEL. 3 CYL.
1818	KND 3200	STATIONARY ENGINE	YEMEN MODEL
1945	L295, 295 DT TRACTOR	TILLER. 1 CYL.	EGYPT MODEL. 3 CYL.
1955	KUBOTA 18.5 HP.	3 CYL. CRANKSHAFT	
1956	KUBOTA 22 HP.	3 CYL. CRANKSHAFT	
1957	KUBOTA 4 CYL.	4 CYL. CRANKSHAFT	
1982	NEW MODEL	3 CYL. SPLINE. STROKE 2.756	MAIN DIA Ø 1.6915"-1.692". CON DIA Ø 1.5735"-1.574"
LADA			
1533	2103		STROKE 80 mm. 4 CYL.
1534	2101 / 2107		STROKE 66 mm. 4 CYL.
1720	CTK 70581	52215	STROKE 84 mm. 4 CYL.
1721	CTK 70581	52215	STROKE 86 mm. 4 CYL.
1722	CTK 70581	52215	STROKE 88 mm. 4 CYL.
1883	STROKE : 80 mm. RUSSIA	WITH POLO HOLE	4 CYL. SUITABLE FOR RUSSIA MARKET
LANDROVER			
1117	MODEL 1948-1954		4 CYL.
1118	MODEL 1984, ONWARDS	ERC 5014	2.25 LITRE
1176	MODEL 1955-1958	241893	2 LITRE
1177	MODEL 1959-1963	527167	2.25 LITRE
LEYLAND			
1121	400/401/402/411	F3336611; CJ0004	BRITISH LEYLAND U.K.
1684	154 TRACTOR	4 CYL.	BRITISH LEYLAND U.K.
1965	LEYLAND	CRANKSHAFT : ASHOK LEYLAND. # X3307711	HAEC57/1. 6 CYL.
LOMBARDINI			
1179	GL 520 API		1 CYL.
1180	GL 520 GL 5		6 SPLINES. 1 CYL.
1181	GL 520 GL 5		SINGLE KEY FOR PUMP. 1 CYL.
1184	LDA 510		SHORT. TAPER DEGREE AFTER GEAR
1187	MINIDOR		STROKE : 44 mm
1506	LDA 450		1 CYL.

SE REF	ENGINE #	PART #	DESCRIPTION
LOMBARDINI			
1568	1 CYL. ITALY	ITALY MODEL	EXTRA LONG KEY / THREADING
1679	6LD360		
1696	1 CYL. ITALY	ITALY MODEL	FITTED WITH 2 GEARS
1697	LDA 904 L20		2 CYL.
1713	LDA 11-D		SERBIA MODEL. 1 CYL.
1714	LDA 12-K		SERBIA MODEL. 1 CYL.
1766	LDA 450 / 510		1 CYL.
1884	LDA 510 LONG		STROKE : 45 mm. 1 CYL. SYRIA MODEL
1885	LDA 510 SHORT		STROKE : 45 mm. 1 CYL. SYRIA MODEL
M.A.N.			
1661	D 0846	51.02101.7117	6 CYL. WITH SEPARATE COUNTER WEIGHT
1698	D 2156 / D 2356	51.02101.7123	6 CYL. WITH SEPARATE COUNTER WEIGHT
1897	MAN	51.02101.1013; 51.02101.0013	6 CYL. WITH 6 COUNTER WEIGHTS
MAZDA - KIA			
1523	SL 3500	SL01 11 301 C	4 CYL.
1699	SL 3600		4 CYL.
MERCEDES BENZ			
1123	OM 352 6 CYL.		WITH INTEGRATED COUNTER WEIGHT OIL SEAL : THREADED
1124	OM 352/A 6 CYL.	3520308002	WITH INTEGRATED COUNTER WEIGHT OIL SEAL : KNURLED
1125	OM 312/321 6 CYL.	1210 DI	WITH INTEGRATED COUNTER WEIGHT OIL SEAL : THREADED
1126	OM 312/321 6 CYL.	1210 SE	WITH INTEGRATED COUNTER WEIGHT OIL SEAL : KNURLED
1130	OM 314/A 4 CYL.	3140302002; 3140303202; 3140305205; 3140305501; 3140306102	WITH INTEGRATED COUNTER WEIGHT OIL SEAL : THREADED
1557	OM 314/A 4 CYL.	3140303302; 3140305502; 3140306002	WITH INTEGRATED COUNTER WEIGHT OIL SEAL : KNURLED
1158	OM 366/A/LA 6 CYL.	3660301602; 3660301502; 3660301402; 3660301102; 3660300702	WITH INTEGRATED COUNTER WEIGHT OIL SEAL : KNURLED
1680	OM 352/353 6 CYL.	3520303402; 3520306802; 3520307402	WITH SEPARATE COUNTER WEIGHT OIL SEAL : THREADED
1681	OM 352/353 6 CYL.	3520300902; 3520303702; 3520305802; 3520307002; 3520307802	WITH SEPARATE COUNTER WEIGHT OIL SEAL : KNURLED
1682	OM 314/A 4 CYL.	3140303202; 3140305205; 3140306102; 3140302002; 3140305501	WITH SEPARATE COUNTER WEIGHT OIL SEAL : THREADED
1683	OM 314/A 4 CYL.	3140303302; 3140305502; 3140306002	WITH SEPARATE COUNTER WEIGHT OIL SEAL : KNURLED
1767	OM 366/A/LA 6 CYL.	3660301102; 3660300702	WITH SEPARATE COUNTER WEIGHT OIL SEAL : KNURLED
1768	OM 355 / OM 355A	3550306701; 3550306801	WITH SEPARATE COUNTER WEIGHT. 6 CYL.
1787	OM 366/A/LA 6 CYL.		WITH INTEGRATED COUNTER WEIGHT OIL SEAL : THREADED
1898	OM 364/A/LA 4 CYL.	364.030.1102; 364.030.0702; 364.030.1302; 364.030.1402; 364.030.1201; 374.030.0002	INTEGRAL COUNTER WEIGHTS. ASPIRATED/TURBO INTERCOOLER BUSES 610 U / L 709 / L 710 / L 712 / L 912 / L 915 CHASSIS W / BUS LO 712/812 - OF 809 / 812-LB 814 / LN 914 / 914 ON / OF 1114 / OF 1214 97.5 mm
1937	OM 314 - IRAN MODEL SHORT NOSE	SHORT NOSE : 91 mm. 4 CYL.	WITH INTEGRATED COUNTER WEIGHT OIL SEAL : KNURLED.
1981	OM 355	WITH INTEGRATED COUNTER WEIGHT	OIL SEAL : THREADED. 6 CYL.
MITSUBISHI - HYUNDAI			
1145	ME013668 4D31; 201 C.I.D.	ME013668; 11-220	FE TURBO DIESEL TRUCK. M111. 4 CYL. 3.3 LITER
1146	T-120 COLT	M111 JAPAN	4 CYL.
1572	T-120 SS		4 CYL.
1594	MITSUBISHI M25	HD 330. HP 25	YEMEN MODEL. WITHOUT BALANCE WEIGHT & GEAR

SE REF	ENGINE #	PART #	DESCRIPTION
MITSUBISHI - HYUNDAI			
1595	MITSUBISHI 4D55		4 CYL.
1606	4D34		4 CYL.
1746	MITSUBISHI 6D 22 6 CYL. 111.60 KGS.	GEAR FACE HOLES : 6 + 1 FLANGE HOLES : 8 + 1	MAIN JOURNAL DIA Ø : 100.00 mm. CON PIN DIA Ø : 84.00 mm THROW : 70.00 mm
1765	MITSUBISHI 6D 16 6 CYL. 58.00 KGS.	GEAR FACE HOLES : 6 + 1 FLANGE HOLES : 6 + 1	MAIN JOURNAL DIA Ø : 79.95 mm. CON PIN DIA Ø : 64.94 mm THROW : 57.50 mm
1792	HYUNDAI	23100-41001	IRAN MODEL. 4 CYL.
1801	4D32		4 CYL.
1802	4D33		4 CYL.
1803	4D35		4 CYL.
1861	HYUNDAI H100	10231694	4 CYL.
1863	MITSUBISHI 4D56	4D56	4 CYL.
1939	4D56T	# MO376961	4 CYL.
1963	MITSUBISHI - HYUNDAI	MITSUBISHI 4D34T HYUNDAI H-4D72	4 CYL.
MWM SERIE			
1700	D 229 4 CYL.	118670; 118690	WITH SEPARATE COUNTER WEIGHT AVAILABLE WITH BALANCER GEAR RING
1811	SERIE 10. 4 CYL	IVW-X104	AVAILABLE WITH BALANCER GEAR RING
1812	SERIE 10	IVW-X106	6 CYL.
NAVISTAR			
1676	3110995R91 D154, 154 C.I.D. 2.5 LITER G164, 164 C.I.D. 2.7 LITER D165, 165 C.I.D. 2.7 LITER D171, 171 C.I.D. 2.8 LITER	3110995R91; 05700AB; 751303; 751303R2; 751303R3; 751303R5; 8629 (DB TRACTOR)	144, 364, 384, 444 TRACTORS S, SC, SE TRACTORS GAS, 350, 500B, 600B, 780, 880, 885, 4600 TRACTORS 4 CYL.
1677	3144626R91 D239 239 C.I.D. 3.9 LITER	3144626R91; 015C1; 3132752R3; 015C1 1089; 3144626; 182752R2; 37CR4; 2744406R1; IH625R2	544, 574, 674, 684 685 BACKHOE, 685 TRACTOR, TD7, TD7E, TD8C CRAWLER TRACTORS, TD8 DOZER AVAILABLE WITH BALANCER GEAR RING. 4 CYL.
1678	3228376R91 D268 268 C.I.D. 4.4 LITER	3228376R91; 218528R1; 528R2-79; 218528R2; A09-7292; 218528R3; 3.218528R1	510B LOADER NEUSS DIESEL (GERMAN BUILT) AVAILABLE WITH BALANCER GEAR RING 4 CYL.
NISSAN			
1797	NISSAN. MODEL NE6	CPB12	6 CYL.
PERKINS MF - LANDINI			
3 CYL. Crankshafts			
1101	31312436 3.152 ROPE 152 C.I.D. 2.5 LITER 3 CYL.	31312436; 026005M1; 736532M91; 31312419; 84402; 31312436; SD260034; 31312441; U5BG0031; 31312700; ZZ90084; 3637454M91; ZZ90116; 467; ZZ90148	KEYED NOSE. ROPE SEAL AGRICULTURAL: MF-35, 135, 148, 230, 240, 250, 254, 254S, 255, 350, 353, 355, 360, 363, 550 INDUSTRIAL: MF-20B, 20D, 20E, 20F, 30E, EPH, 40, 40E MF-LANDINI C4500, R-DT5500
1666	3.152. 3 CYL.	84399; 31312437; 72080077; 4222686M1, 4222686V1; ZZ90147; ZZ90120; 72080077V	SPLINED NOSE. ROPE SEAL
1729	3.152; D3.152 3 CYL.	ZZ90148; ZZ90116; 3638309M91; 84402	KEYED NOSE. ROPE SEAL FITTED WITH COUNTER WEIGHT, WASHER & SCREW ALSO AVAILABLE WITH NOSE GEAR
1102	31312701 3.152 LIP 152 C.I.D. 2.5 LITER 3 CYL.	026053M; 94458; 31312701; 94464; 31312707; U5BG0027; 31315135; ZZ90078; 3637410M91; ZZ90150; ZZ90122; 637399M91	KEYED NOSE. LIP SEAL AGRICULTURAL: MF-135, 148, 230, 240, 250, 254, 254S, 255, 350, 353, 355, 360, 363, 550 INDUSTRIAL: MF-20B, 20D, 20E, 20F, 30E, 30H, 40, 40E MF LANDINI C4500, R-DT5500
1667	3.152 3 CYL.	31312702; 31312704; 94463; 94459; ZZ90117	SPLINED NOSE. LIP SEAL
1730	3.152 3 CYL.	3132.0002K96/3	KEYED NOSE. LIP SEAL FITTED WITH COUNTER WEIGHT, WASHER & SCREW ALSO AVAILABLE WITH NOSE GEAR
1888	PERKINS 1103 SPLINED	1103 / 1103B-33 / 1103C-33 / 1103C-33T 4181V017 - PERKINS DIESEL	LIP SEAL. 3 PULLEY HOLES. 6 + 1 FLANGE HOLES. 3 CYL.

SE REF	ENGINE #	PART #	DESCRIPTION
PERKINS MF - LANDINI			
3 CYL. Crankshafts			
1889	3.152 3 CYL.	84399; 31312437	SPLINED. ROPE. WITH COUNTER WEIGHT ALSO AVAILABLE WITH NOSE GEAR
1890	3.152 3 CYL.	31312702; 31312704; 94463; 94459; ZZ90117	SPLINED. LIP. WITH COUNTER WEIGHT ALSO AVAILABLE WITH NOSE GEAR
1975	PERKINS 1103 MILLED - KEYED	PART # ZZ90236	SNOUT : MILLED - KEYED. 3 CYL. 3 PULLEY HOLES. LIP SEAL. 6 + 1 FLANGE HOLES.
4 CYL. Crankshafts			
1834	31315824 4.108 ROPE 107 C.I.D. 1.8 LITER 4 CYL.	31315824; ZZ90124; 84417; U5BG0056	ROPE SEAL 445, 4600M, L555 SKID LOADER, E146 LOADER, M434-4 TRENCHER INDUSTRIAL, MARINE
1103	31315145 4.203 ROPE 203 C.I.D. 3.3 LITER 4 CYL.	026008MI; 3638473M91; 31315135; 742742M91; 31315138; 84407; 31315145; 85811; 31315148; 92484; 31315167; 92485; 31315184; U5BG0017; ZZ90121; U5BG0028; 3637399M91	KEYED NOSE. ROPE SEAL A4.203, AD4.203, AG3.152 GAS MF-65, 150, 155, 158, 165, 650, 765, MF-INDUSTRIAL 50, LANDINI PERKINS, 192, A4, R-DT6000
1668	4.203; D4.203 4 CYL.		SPLINED NOSE. ROPE SEAL
1104	31315184 4.203 LIP KEYED NOSE 203 C.I.D. 3.3 LITER	026032M1; 94441; 31315182; 94454; 31315184; 94455; 742344M91; ZZ90111; 026033; 3637458M91	KEYED NOSE. LIP SEAL. 4 CYL. A4.203, AD4.203 MF-65, 155, 158, 165, 650, 765 MF-INDUSTRIAL 50, LANDINI PERKINS A4.203, R-DT6000
1669	31315181 4.203 LIP SPLINED NOSE 203 C.I.D. 3.3 LITER	026032M1; 94441; 31315181; 94454; 31315182; 94455; 31315184; ZZ90111; 742344M91	SPLINED NOSE. LIP SEAL. 4 CYL. HYSTER CHALLENGER 860C FORKLIFT
1105	4.236 / 4.248 4 CYL. HEAVY WEIGHT	3637789M91; U5BG0054; 31315911; 31315912; 84422; 85721; ZZ90093; 84421; 94434; 7340893M1; 31315851; 68050; 31315884	SPLINED NOSE. ROPE SEAL. EW MF 178, 185, 188, 194-F, 285, 294S-4S, 393, 397 MF INDUSTRIAL 50E/EX, 60H, 60H "S" SERIES MF LANDINI R-DT8500, C7800, C7830 PERKINS A4.248, 4.248
1106	4.236 / 4.248 4 CYL. HEAVY WEIGHT	3637401M91; U5BG0024; 31315981; 31315982; 31315991; 94435; 94436; ZZ90082; ZZ90081; ZZ90143; 741747M1	SPLINED NOSE. LIP SEAL. EW MF 265, 274, 274S, 274SK, 275, 285, 284S-4S, 365, 373, 375, 377, 383, 387, 565, 575, 675, 3050, 194-F, 285, 294-S-4S, 393, 397, 178, 185, 188 MF LANDINI R-DT6550, MF LANDINI R-DT8500 PERKINS A4.236, PERKINS A4.248, C6830, R-DT7550, R-DT7530F 4.248 MF COMBINES 440, MF INDUSTRIAL 50, 50B, 50E/EX 50H/HX, 50H/HX'S' SERIES MF INDUSTRIAL 50E/EX, 60H, 60H'S' SERIES
1769	4.236 / 4.248 4 CYL. HEAVY WEIGHT	ZZ90202; ZZ90081; 364040M91; 3665768M2	SPLINED NOSE. LIP SEAL. EW 12 FLANGE HOLES
1770	4.236 / 4.248 4 CYL. HEAVY WEIGHT	364040M91; 3665768M2	SPLINED NOSE. LIP SEAL. EW 12 FLANGE HOLES. 3 PULLEY HOLES
1107	4.236 / 4.248 4 CYL. LIGHT WEIGHT	31315911; 31315912; 84422; 85721; ZZ90093; 736829M91; ZZ90108; 3637789M91; 3639541M1	SPLINED NOSE. ROPE SEAL MF 168, 175, 178, 185, 188, 265, 274, 274S, 274SK, 275, 285, 284-4S, 365, 373, 375, 377, 383, 387, 565, 575, 675, 3050. MF LANDINI R-DT7500, R-DT6550, C6830, R-DT7550, R-DT7530F, PERKINS 4.236; A4.236, MF COMBINES 440, MF INDUSTRIAL 50, 50B, 50E/EX, 50H/HX 'S' SERIES
1670	4.236 / 4.248 4 CYL. LIGHT WEIGHT	U5BG0026; 31315664	SPLINED NOSE. ROPE SEAL 3 PULLEY HOLES
1108	4.236 / 4.248 4 CYL. LIGHT WEIGHT	31315871; 31315631; 31315641; 31315664; 85821; 94433; 94434; 26042; 26046; U5BG0052; ZZ90122; ZZ90082; 736829M91; 741750M1; UR040591/3	SPLINED NOSE. LIP SEAL MF 158, 175, MF LANDINI R-DT7500
1736	4.236 / 4.248 4 CYL. LIGHT WEIGHT	ZZ90143; 3641031M91	SPLINED NOSE. LIP SEAL 3 PULLEY HOLES
1737	4.236 / 4.248 1004 SERIES 4 CYL. LIGHT WEIGHT	ZZ90119; ZZ90202; PHASER 90 ENG.	LONG NOSE. SPLINED. LIP SEAL 3 PULLEY HOLES
1551	4.212; D4.212	85719; ZZ90100; ZZ90076; 3637457M91; 737189M91	KEYED / SPLINED NOSE. ROPE SEAL MF 165 WITH A4.212. 4 CYL.

SE REF	ENGINE #	PART #	DESCRIPTION
PERKINS MF - LANDINI			
4 CYL. Crankshafts			
1552	4.212; D4.212	94430; ZZ90077; 3637453M91; 742873M91	KEYED / SPLINED NOSE. LIP SEAL MF 165 WITH A4.212. 4 CYL.
1662	TE20, MF35, 135	825216M1	PETROL MODEL
1709	TEF20 DIESEL MF35; 23C DIESEL	302205; 1884134M91	4 CYL.
1790	NEW 1004.4T	PHASER 135 TI; 110 TI; ZZ90145	LIP SEAL. 3 PULLEY HOLES. 4 CYL.
1791	4.236 / 4.248 4 CYL.	31315661 HEAVY WEIGHT	SPLINED NOSE. LIP SEAL. EW 6 + 1 FLANGE HOLES. 3 PULLEY HOLES
1798	Y.236 4 CYL.	ZZ90082 HEAVY WEIGHT	SPLINED NOSE. ROPE SEAL. EW 6 + 1 FLANGE HOLES. 3 PULLEY HOLES
1820	PERKINS 1004G; SERIES 1004-4	ZZ90238 4.236; 4.248	NEW 1000 SERIE; 1004-40; 1004-42; 100 SERIE EW 4 CYL.
1835	4.236 / 4.248 SUPERCEDE VERSION	31315993	SPLINED NOSE. ROPE SEAL. HEAVY CRANKSHAFT 4 CYL.
1836	4.236 / 4.248 1004 / 1004.42 SERIES	ZZ90202 NEW PHASER VERSION	SPLINED NOSE. LIP SEAL 3 PULLEY HOLES. 4 CYL. ALSO AVAILABLE IN HEAVY CRANKSHAFT VERSION
1837	4.236 / 4.248 1104 SERIES	NEW VERSION. ELECTRONIC ENGINE	LONG NOSE. SPLINED. LIP SEAL 3 PULLEY HOLES. 4 CYL. ALSO AVAILABLE IN HEAVY CRANKSHAFT VERSION
1838	4.236 / 4.248 TURBO ENGINE	ZZ90212	SPLINED NOSE. LIP SEAL. 10 FLANGE HOLES. 3 PULLEY HOLES TUFFTRIDED. 4 CYL.
1839	1004 / 1104 SERIES	ZZ90222	SPLINED NOSE. LIP SEAL. 10 + 1 FLANGE HOLES 3 PULLEY HOLES. HEAVY CRANKSHAFT. 4 CYL. TIMING RING FITMENT PROVISION
1710	1 THRUST PLATE 3 BOLTS		SUITABLE FOR 4.248 / 4.236 / 6.354 CRANKSHAFT
1851	PERKINS 400 SERIES	404C-2.2 OEM NO. : 115256990	STROKE : 100 mm. 4 CYL.
1852	PERKINS 1004 TURBO ENGINE	PHASER SERIES. ZZ90212	SPLINED NOSE. LIP SEAL. 3 PULLEY HOLES. 10 + 1 FLANGE. NITRIDING. 4 CYL.
1853	PERKINS 1004/1104 SERIES	1004/1104 SERIES	SPLINED. LIP. 3 PULLEY HOLES. 10 + 1 FLANGE. WITH TIMING RING FITMENT PROVISION. 4 CYL.
1854	PERKINS 400 SERIES	404C-2.2 OEM NO. : 115256750	STROKE : 90 mm. 4 CYL.
1862	PERKINS ZZ90093	MF # 3639541M1; JCB # 02101158	SPLINED. LIP SEAL. 3 PULLEY HOLES. 10 + 1 FLANGE. 4 CYL.
1921	PERKINS MF 1004.4; 1004.40	PERKINS : ZZ90239. 4225085M91; AD-104082; 1004.4; 1004.40 ZZ90222; ZZ90237; ZZ90239 ME : OEM : 4225085M91; 4226955M91; 4227020M91 TRACTOR : 3435 VSF 3445 VSF 3455 VSF 5425 5435 5445 5455 5460 6445 6455	SPLINED NOSE. 3 PULLEY HOLES LIP SEAL. 6 + 1 FLANGE HOLES WITH TIMING RING WEB REF : GM1123 4 CYL.
1922	PERKINS ZZ90239	PERKINS 1104 ORIGINAL REF : ZZ90239	SNOUT : 3 HOLES, SPLINED, KEYED FLANGE : LIP SEAL. 10 HOLES, 1 DOWEL WITH SEPARATE TIMING RING FITMENT WEB. 4 CYL.
1927	NEW - PERKINS 1104 BIG END Ø 69.4 mm	PERKINS 1104. 4 CYL. 69.4 mm BIG END Ø	SNOUT : 3 HOLES, SPLINED, KEYED FLANGE : LIP SEAL. 10 HOLES, 1 DOWEL
1935	ZZ90222; ZZ90239 NEW LATER VERSION	LONG WEB CRANKSHAFT 232-7400, ZZ90224, 4225086M91, 4225085M91, 1-153	SPLINED. 3 PULLEY HOLES. LIP SEAL. 10+1 FLANGE HOLES. WITH SEPARATE TIMING RING. 4 CYL.
1936	ZZ90222; ZZ90239 TIMING RING NEW LATER VERSION	LONG WEB CRANKSHAFT 232-7400, ZZ90224, 4225086M91, 4225085M91, 1-153	LOOSE TIMING RING.
1967	PERKINS PK 4.318	31315952, 31315843, 31315971 31316323, 31316324, 31316325	4 CYL.
1968	PERKINS A4.318 DIESEL	PERKINS ENGINE A4.318 DIESEL MASSEY FERGUSON # MF285, MF1085	4 CYL.
1978	MFS063	OEM : 1047539M1, Z145C500, Z145C600	MODEL : 135, 150, 230, 235, 245 WITH Z145 CONTINENTAL ENGINE. 4 CYL.
1979	MF TRACTOR 2635	SIMPSON - MASSEY FERGUSON PART # 3906519M1, # S4002610, # 1900227S01	4 CYL.

SE REF	ENGINE #	PART #	DESCRIPTION
PERKINS MF - LANDINI			
6 CYL. Crankshafts			
1109	6.305	31323146; 84433; 026020N	KEYED NOSE. ROPE SEAL. 6 CYL.
1690	6.305		KEYED NOSE. LIP SEAL. 6 CYL.
1553	6.354.4 6 CYL.	U5BG0037; ZZ90113; 3637408M91	KEYED NOSE. ROPE SEAL. MF 399, 699, 1014, 1114, 1134, 1250, 2620, 2640, 2645, 2680, 2685, 2720, 2725, 3080, 3090, 3650. MF COMBINES 24, 27, 29, 29XP, 31, 530, 535, 560, 565, 620, 625, 660, 665, 750, 800, 805, 825 MF LANDINI R-DT1000, R-DT100005, R-DT12500, R-DT1300 MKII, R-DT14500 MKII, PERKINS A6.354.4, A6.372.4
1775	6.354.4	ZZ90196	KEYED NOSE. ROPE SEAL. 3 PULLEY HOLES. 6 CYL.
1741	6.354.4 6 CYL.	31314021; 313111021; 68076; ZZ90086; 3637404M91; ZZ90113; 748751M1	KEYED NOSE. LIP SEAL. MF 2705, 3525, 3545, 3630, 3650 MF COMBINES 550, 750, 760, 850, 860 MF LANDINI R-DT14500, PERKINS A6.354.4, T6.354.4
1554	6.354.4; 6 CYL.	U5BG0035; 313H021	KEYED NOSE. LIP SEAL. 3 PULLEY HOLES
1560	6.354.4	ZZ90105; 3131H022	KEYED NOSE. LIP SEAL. TUFFTRIDED. 6 CYL.
1776	6.354.4 6 CYL.	U5BG0038; 3637406M91; 4224054M91	KEYED NOSE. LIP SEAL. 3 PULLEY HOLES. TUFFTRIDED
1671	1006 PHASER SERIES	3637019M91; ZZ90218	KEYED NOSE. LIP SEAL. 3 PULLEY HOLES WITHOUT GEAR COLLAR STEP. 6 CYL.
1110	6.354.2 6 CYL.	31322361; 31322316; 31322317; 31322363; 31322364; 68063; 85727; 68063; ZZ90089; U5BG0045; 742150M1; 736902M1	SPLINED NOSE. ROPE SEAL. MF 1100, 1014, 1200 MF COMBINES 500, 510, 515, 520, 525, 620, 625 MF LANDINI R-DT9500, R-DT10000, R-DT10005 PERKINS A6.354, A6.354.1, A6.354.2, A6.372, A6.372.1
1555	6.354.2 6 CYL.	31323261; 31323262; 94468; 94460; 94443; ZZ90090; U5BG0048; 742160M1; 742161M1	SPLINED NOSE. LIP SEAL. MF 1100, 1014, 1200 MF COMBINES 500, 510, 515, 520, 525, 620, 625 MF LANDINI R-DT9500, R-DT10000, R-DT100005 PERKINS A6.354, A6.354.1, A6.354.2, A6.372, A6.372.1
1701	PERKINS 6.358	635855	SPLINED NOSE. LIP SEAL HEAVY DUTY CRANKSHAFT. 6 CYL.
1789	PERKINS 1106	PHASER 180TI; 6.354 PHASER 3638402M91; ZZ90085; ZZ90087	KEYED NOSE. LIP SEAL. 3 PULLEY HOLES. 6 CYL.
1806	6.305	EBRO TRACTOR	LIBYA MODEL. SPLINED. LIP SEAL. 6 CYL.
1840	PERKINS 4225497M1	PERKINS : ZZ90213 MF : 3637019M91	KEYED NOSE. LIP SEAL. 3 PULLEY HOLES. 6 CYL. WITH SEPARATE TIMING RING
1887	1106 SERIES TIMING RING	PERKINS. 3116L002/159	LOOSE TIMING RING
PERKINS - IMT - IMR			
1780	3.152 3 CYL.	IMT 539. M33. 813674	KEYED NOSE. ROPE SEAL. mm THREADING FITTED WITH COUNTER WEIGHT, WASHER & SCREW
1781	3.152 3 CYL.	IMT 549. DM33	KEYED NOSE. LIP SEAL. mm THREADING FITTED WITH COUNTER WEIGHT, WASHER & SCREW
1793	4.203 ROPE	IMR 60. M34. R-65. A4203. IMT 560. MF-65. 65	KEYED NOSE. ROPE SEAL. mm THREADING. 4 CYL.
1794	4.203 LIP	IMR 65. 700147; DM34	KEYED NOSE. LIP SEAL. mm THREADING. 4 CYL.
1813	IMR S44/V	4.236. LIGHT WEIGHT. 4 CYL.	AVAILABLE WITH ROPE SEAL / LIP SEAL. mm THREADING
1778	IMR S44/T	4.248. HEAVY WEIGHT. 4 CYL.	AVAILABLE WITH ROPE SEAL / LIP SEAL. mm THREADING
1814	IMR S46	6.354. 6 CYL. SPLINED NOSE	AVAILABLE WITH ROPE SEAL / LIP SEAL. mm THREADING
1815	IMR TS46	T6.354. 6 CYL. KEYED NOSE	AVAILABLE WITH ROPE SEAL / LIP SEAL. mm THREADING
PEUGEOT			
1539	504		WITH SEPARATE COUNTER WEIGHT. 4 CYL.
1706	XDP40		4 CYL.
1899	PEUGEOT XD3P	XD3P. J9. 2500 CC	4 CYL.
RENAULT			
1562	12.1400 MOTOR	7700564485	4 CYL.
1723	1.6 GASOLINE		4 CYL.
1724	2.2 DIESEL		4 CYL.
RUSSIAN "T/D" SERIES - VTZ			
1503	T-25. VTZ T-25 A	D21-10005007-A2 D21-1005011-A3	DIA Ø 12. DIA Ø 14 WITH SEPARATE COUNTER WEIGHT. 2 CYL.
1702	T-25; T-16 D-120	Z1-100501143; D21-1005011B	DIA Ø 12. DIA Ø 14 WITH INTEGRATED COUNTER WEIGHT. 2 CYL.
1703	T-40; LTZ T-40M	D 144-1000 120-10	WITH SEPARATE COUNTER WEIGHT. 4 CYL.
1752	D144. T-40	D -371005011B D37M-1005011-B	WITH INTEGRATED COUNTER WEIGHT. 4 CYL.

SE REF	ENGINE #	PART #	DESCRIPTION
SMD - JUMZ			
1753	SMD 18/22 SMD-20	20-04c9 206167	JUMZ 6M; DT-75; NIVA; JENISEJ RUSSIA & UKRAINE. 4 CYL.
1754	SMD-60 / T-150	60-04001-00; Z0-0401 102227	JUMZ. WITH SEPARATE COUNTER WEIGHT RUSSIA & UKRAINE
1755	T-150		WITH INTEGRATED COUNTER WEIGHT. RUSSIA & UKRAINE
SOLIS - SONALIKA			
1900	SOLIS - SONALIKA	# 700403068L	INTEGRAL WEIGHT. 4 CYL.
1901	SOLIS - SONALIKA	INTEGRAL WEIGHT. 3 CYL.	STROKE : 118
STEYR			
1917	STEYR 3 CYL.	STEYR : 360KOMPAKI # 4785111, 98461246 8035.05, 8035.06 MODEL : 8090	3 CYL.
SUZUKI			
1142	SUZUKI 800		3 CYL.
1143	SUZUKI SJ 410	1222175101	1000 CC. 4 CYL.
1522	SUZUKI SJ 413		4 CYL.
1771	SUZUKI V6		6 CYL.
TOYOTA			
1573	TOYOTA 1 Y	22RE 4 CIL 2.4L	4 CYL.
1928	TOYOTA 13 B	13401-58020	4 CYL.
1929	TOYOTA 14 B	13401-58030 / 58021 / 58050	4 CYL.
1930	TOYOTA 3 L	13401-54020 / 54060 / 54080 / 54100	4 CYL.
TATA			
1841			SUMO ENGINE
1842			INDICA ACE
1843			SAFARI
1844			INDIGO
1845			VISTA / MANZA / XENON
TUMOSAN			
1905	TUMOSAN 3 CYL.	TUMOSAN TRACTOR : 4785111, 98461246, 5088486, 99464932	46 SERIES : 55-46, 60-46 56 SERIES : 55-56, 60-56 65 SERIES : 55-65, 60-65 66 SERIES : 45-66, 50-66, 55-66, 66 SERIES : 56-66, 60-66 75 SERIES : 55-75, 60-75 76 SERIES : 45-76, 55-76, 60-76 85 SERIES : 55-85, 60-85, 62-85 86 SERIES : 55-86, 62-86 88 SERIES : 55-88, 60-88 90 SERIES : 55-90, 60-90 93 SERIES : 60-93 94 SERIES : 60-94. L SERIES : L60
1906	TUMOSAN 4 CYL.	TUMOSAN TRACTOR # 80.66 # 4785304, 4785110, # 98451529, 5088487	MAIN JOURNAL DIA Ø : 79.791 mm CON PIN DIA Ø : 63.744 mm STROKE : 115 mm FLANGE : 114 mm. 7 HOLES
TVS - 3 WHEELER - NIGERIA MODEL			
1942	TVS 3 WHEELER	# G1020010 CRANKSHAFT COMPLETE. NP.049	3 WHEELER. COMPLETE ASSEMBLY CRANK, CONNECTING ROD, PISTON, ETC.
URSUS			
1147	URSUS C-330	42.03105.0/3	2 CYL.
1830	URSUS	C-330	2 CYL.
1659	URSUS C-360	46.40399.0/3	HEAVY DUTY (URSUS II). 4 CYL.
1193	URSUS	S-4003	ZETOR TYPE. 4 CYL.
1886	URSUS C-385	83.003.501	HEAVY DUTY (URSUS II). 4 CYL.
1887	URSUS C-385	89.003.503	HEAVY DUTY (URSUS II). 6 CYL.
UTB - ROMANIA			
1153	UTB 650	10303010	SMALL FLANGE. ROPE SEAL. 4 CYL.
1154	UTB 660	2402.03.0301; 10303020	BIG FLANGE. LIP SEAL. 4 CYL.

SE REF	ENGINE #	PART #	DESCRIPTION
YAMAHA			
1931	YAMAHA	PART # G16, G22, G29	
YANMAR - HYUNDAI - KUBOTA - ANDORIA - STATIONARY ENGINE			
1566	YANMAR TS 160		
1672	YANMAR N22Y	SHORT TYPE MAIN BEARING	YEMEN MODEL
1569	YANMAR N22Y - N28Y	LONG TYPE MAIN BEARING	YEMEN MODEL
1673	YANMAR NP	N15Y - NP16 - NP17	YEMEN MODEL
1831	YANMAR NP	NP30	YEMEN MODEL
1594	mitsubishi M25	HD 330. 25 HP	YEMEN MODEL
1674	ANDORIA S 320	18 HP	POLAND - YEMEN - SAUDI MODEL
1818	KUBOTA KND 3200	KND 3200	YEMEN MODEL
ZETOR			
1151	2011	20010301	CZECHOSLOVAKIA. 2 CYL.
1152	3011	30010301	CZECHOSLOVAKIA. 3 CYL.
1785	3001.0399	3001.0399/3	TRACTOR 50 hp. 3 CYL.
1660	7711	7101.0399/3	HEAVY DUTY. TRACTOR 70 HP. 4 CYL.
1832	4001.0399	4001.0399/3	HEAVY DUTY. TRACTOR 67 HP. 4 CYL.
1707	4911/5911/5945/ 6911/6945		4 CYL.
1508	CZECHOSLOVAKIA S-50	17.0204	SUPER 50 / ZETOR 80 HP. 4 CYL.
1773	78.003.001/3	78.003.001/3	HEAVY DUTY. 4 CYL.
ZTS			
1772	83.003.501	83.003.501/3	HEAVY DUTY. TRACTOR 80 HP. 4 CYL.
1774	89.003.503	89.003.503/3	HEAVY DUTY. TRACTOR 120 HP. 6 CYL.

INDIA RANGE

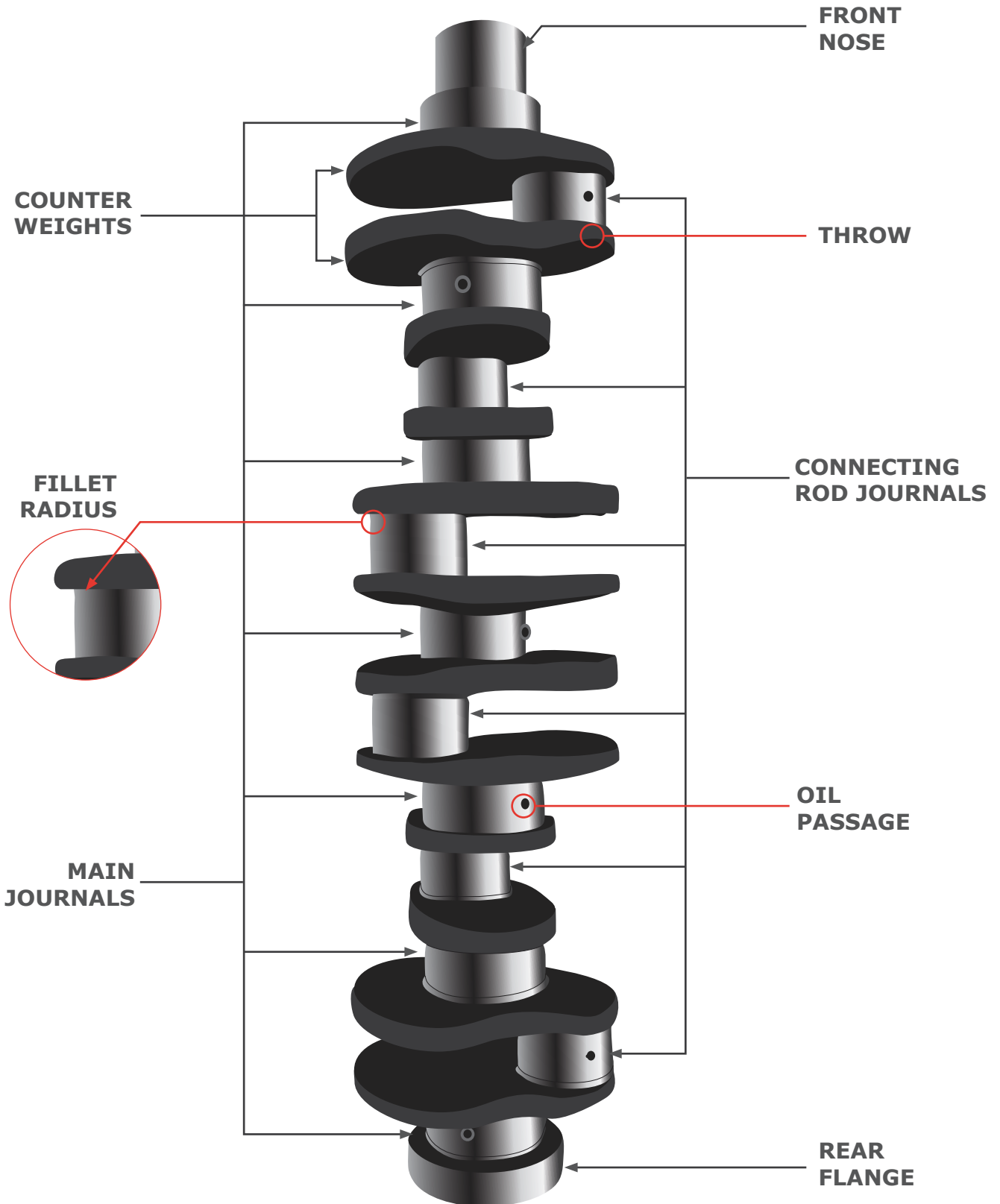
SE REF	DESCRIPTION	SE REF	DESCRIPTION
ACE		KIRLOSKAR / DEUTZ	
D-188	ACE 450	D-124	KTL (2 CYL.) / HA 2
D-189	ACE 350	D-125	KTL (3 CYL.) / HA 3
D-190	ACE FORKLIFT	D-126	KTL (4 CYL.) / HA 4 / JCB 3 DX
BHARAT BENZ		D-127	KTL (6 CYL.) / HA 6
D-191	BHARAT BENZ (6 CYL.)	ALL MODELS AVAILABLE [1-2-3-4-6 CYL.]	
CANTER		LCV	
D-101	CANTER OLD - 6 FLANGE HOLES	D-132	CHEVROLET TAVERA
D-102	CANTER NEW - 9 FLANGE HOLES	D-202	BEAT DIESEL. GM
D-192	VALTRA (4 CYL.)	D-133	HYUNDAI SANTRO (1.0L / 1.1L)
EICHER		D-134	FIAT PUNTO
D-103	24 HP (1 CYL.)	D-203	FORD FIGO
D-104	312 / 364 (2 CYL.)	D-204	TOYOTA QUALIS
D-105	485 / 368	D-205	TOYOTA INNOVA
D-193	XTRAC (1 CYL.)	LEYLAND	
ESCORT		D-135	LEYLAND 400 / 401
D-106	E - 335	D-136	LEYLAND HINO 4E / 4D
D-107	E - 340	D-137	LEYLAND HINO 6E / 6D
D-108	E - 345	D-206	LEYLAND DOST. (4 CYL.)
D-109	E - 340 AVL / E - 350	MAHINDRA & MAHINDRA	
D-110	E - 355	D-138	MAHINDRA (2 CYL.) 225 DI
FARMTRAC		D-139	MAHINDRA (2 CYL.) 225 TU
D-111	E - 430 / 435	D-140	MAHINDRA (3 CYL.) 265 DI / 275 DI / 365 DI
D-112	E - 44 / 55. MAIN Ø 58 mm.	D-141	MAHINDRA (3 CYL.) 385 DI / 275 TU
D-194	E - 44 / 55. MAIN Ø 60 mm.	D-142	MAHINDRA (3 CYL.) LONG STROKE TU / 265 TU
D-195	E - 439. DS PLUS	D-143	MAHINDRA (4 CYL.) 575 DI / 475 DI
D-196	E - 498	D-144	MAHINDRA (4 CYL.) MDI 3200 / 585 DI

SE REF	DESCRIPTION	SE REF	DESCRIPTION
FORD		MAHINDRA & MAHINDRA	
D-113	FORD 3000 / 3600	D-145	ARJUN TRACTOR / MAHINDRA ARJUN
D-114	FORD 4000 / 4600	D-130	MAHINDRA SCORPIO (CHAINDRIVE / GEARDRIVE / LOADKING)
HARSHA		D-207	MAHINDRA (4 CYL.) LONG STROKE
D-115	HARSHA T-25 (2 CYL.)	D-208	YUVO (3 CYL.)
HMT - ZETOR - SONALIKA		D-209	YUVO (4 CYL.)
D-116	2511 / 2522 (2 CYL.)	D-210	MAHINDRA MAXIMO. (2 CYL.)
D-117	3511 / 3522 (3 CYL.)	MAHINDRA - ARJUN	
D-118	5511 / 5911 (4 CYL.)	D-211	ARJUN 555. STROKE 55 mm.
D-119	5922 (4 CYL.)	D-212	ARJUN 605. STROKE 58 mm.
D-120	HINDUSTAN SUPER 50 (4 CYL.)	D-213	MAHINDRA JCB. EARTH MASTER. # 705. STROKE 60.5 mm.
D-121	SONALIKA (3 CYL.) STROKE : 110 mm.	D-214	ARJUN NUVO. (4 CYL.)
D-197	SONALIKA (3 CYL.) STROKE : 118 mm.	MARUTI - SUZUKI	
D-198	SONALIKA (4 CYL.) STROKE : 110 mm.	D-131	MARUTI 800
D-199	SONALIKA (4 CYL.) STROKE : 118 mm.	D-215	SWIFT DIESEL / DZIRE
JCB		D-216	ALTO (3 CYL.)
D-200	JCB 103 mm. BORE. TURBO.	D-217	ALTO (4 CYL.). K-SERIES. WAGON-R
D-201	JCB 106 mm. BORE. NON-TURBO.	D-218	MARUTI ECKO
JOHN DEERE		MAZDA	
D-122	JOHN DEERE (3 CYL.)	D-146	MAZDA 3500
D-123	JOHN DEERE (4 CYL.)	NEW HOLLAND	
	ALL MODELS AVAILABLE [3-4-6 CYL.]	D-219	3630. (3 CYL.)
PERKINS		D-220	IVECO MODEL. 3630. (4 CYL.)
D-147	TAFE S2	SWARAJ / RB SERIES	
D-148	TAFE 30	D-165	S - 724 / RA 2 (2 CYL.)
D-149	P-3	D-166	S - 733 / RB 22
D-150	S-3	D-167	S - 735 / RA 3 (3 CYL.)
D-151	P-4	D-168	S - 855 / RB 33 (3 CYL.)
D-152	S-4	D-169	RB 44 (4 CYL.) LONG KEY / SMALL KEY
D-153	P-4.236.	D-170	RB 66 (6 CYL.) LONG KEY / SMALL KEY
D-154	P-4.248.	D-224	S 735XM. (3 CYL.). STROKE : 55 mm
D-155	400 SERIES (4 CYL.)	D-225	S 735XM. (3 CYL.). STROKE : 58 mm
D-156	P-6	D-226	S 855XM. (3 CYL.)
D-157	S-6	TATA	
D-158	6.354. THIN FLANGE	D-171	TATA CUMMINS (4 CYL.) BT
D-159	6.354. BIG FLANGE	D-172	TATA CUMMINS (6 CYL.) BT
D-221	1000 SERIES (3 CYL.)	D-173	TATA 1510 / 1612 / 1613
D-160	1000 SERIES (4 CYL.)	D-227	TATA 713 (6 CYL.)
D-161	1000 SERIES (6 CYL.)	D-174	TATA 609 / 709 / 1109
D-222	1100 SERIES (3 CYL.)	D-228	TATA 1109. EURO IV. WITH OIL SEAL. NEW TYPE FLANGE
D-162	1100 SERIES (4 CYL.)	D-175	TATA 407
D-163	1100 SERIES (6 CYL.)	D-229	TATA 407. EURO IV. WITH OIL SEAL. NEW TYPE FLANGE
	ALL MODELS AVAILABLE [1-2-3-4-6 CYL.]	D-176	TATA 1210 SE
SHAKTIMAN		D-177	TATA ACE (WITH WEIGHT / WITHOUT WEIGHT)
D-164	SHAKTIMAN (6 CYL.) 6 SEPARATE COUNTER WEIGHTS	D-128	TATA SUMO
D-223	SHAKTIMAN (4 CYL.)	D-129	TATA INDICA

STYR DISCLAIMER

All Manufacturer's Symbols, Numbers And Descriptions Are Used In This Catalogue For Reference Purpose Only And Do Not Imply That Any Part Listed Is The Product Of These Manufacturer's.

CRANKSHAFT DESCRIPTION





CNC Grinders



Horizontal Machining Center



Horizontal Machining Center



Dynamic Balancing



CNC Turning Center



Export Packing

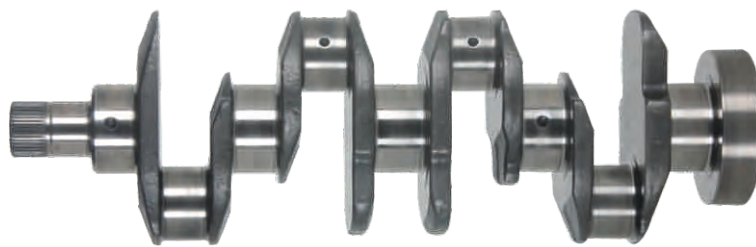


Spectrometer: Bruker GmbH



Quality Control





STYR EXPORTS

STYR - CORPORATE OFFICE :

103, Imperial Palace, 45 Telly Park Road,
Andheri (East) Mumbai-400 069, India.
Tel: +91-22-26822482, 26833162, 26833163
E-Mail: styrexports@gmail.com

STYR - CRANKSHAFT PLANT :

43, Kakti Industrial Area, Kakti,
Belgaum - 591 113, India
Tel : +91-831-2470681
Telefax : +91-831-2473736

URL : www.styrgroup.com

FORGED

HEAVY DUTY CRANKSHAFT



**ISO 9001 : 2015
ACCREDITED**